

Clinton County Iowa

National Adjustment 2011 (NA2011)

Monument Records

2013

Dan Corbin, Inc.
28 River Ridge Lane
Cedar Falls, IA 50613



Cell: (319) 231-7047
Fax: (319) 266-3398
E-Mail: dcorbin@cfu.net

Clinton County, Iowa
Iowa South Zone (1402)
Horiz. Datum: **NAD83(NA2011)**
Vert. Datum: NAVD 1988
US Survey Feet
2013

Point Name: **1**

Designation: 2006-001 Clinton Co Monument (Set by Landmark Engr. in 2006)

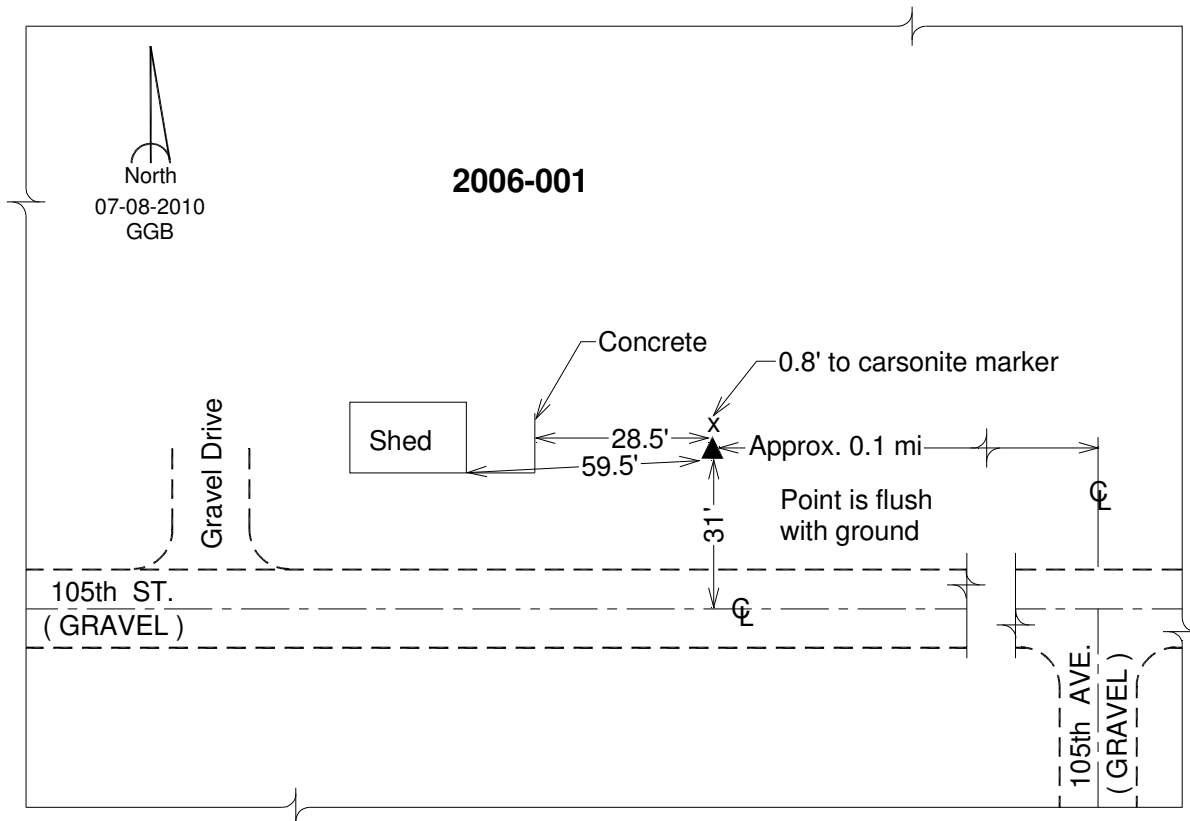
Northing: **748909.74sft** Easting: **2349206.85sft**

Orthometric Height: **844.98sft** Ellipsoid Height: **738.11sft** **Geoid12A**

Latitude: **N42°01'34.60605"** Longitude: **W90°53'27.94240"**

Mapping Angle: **1°43'07"** Combination Scale Factor: **1.000016969**

Monument Type: 3/4" x 7' aluminum rod monument encased in a PVC sleeve.



This document was prepared by DCI on 05-29-2013 for use by Clinton County, Iowa.

Clinton County, Iowa
Iowa South Zone (1402)
Horiz. Datum: **NAD83(NA2011)**
Vert. Datum: NAVD 1988
US Survey Feet
2013

Point Name: **2**

Designation: 2006-002 Clinton Co Monument (Set by Landmark Engr. in 2006)

Northing: **749654.07sft** Easting: **2378893.69sft**

Orthometric Height: **842.37sft** Ellipsoid Height: **735.35sft** **Geoid12A**

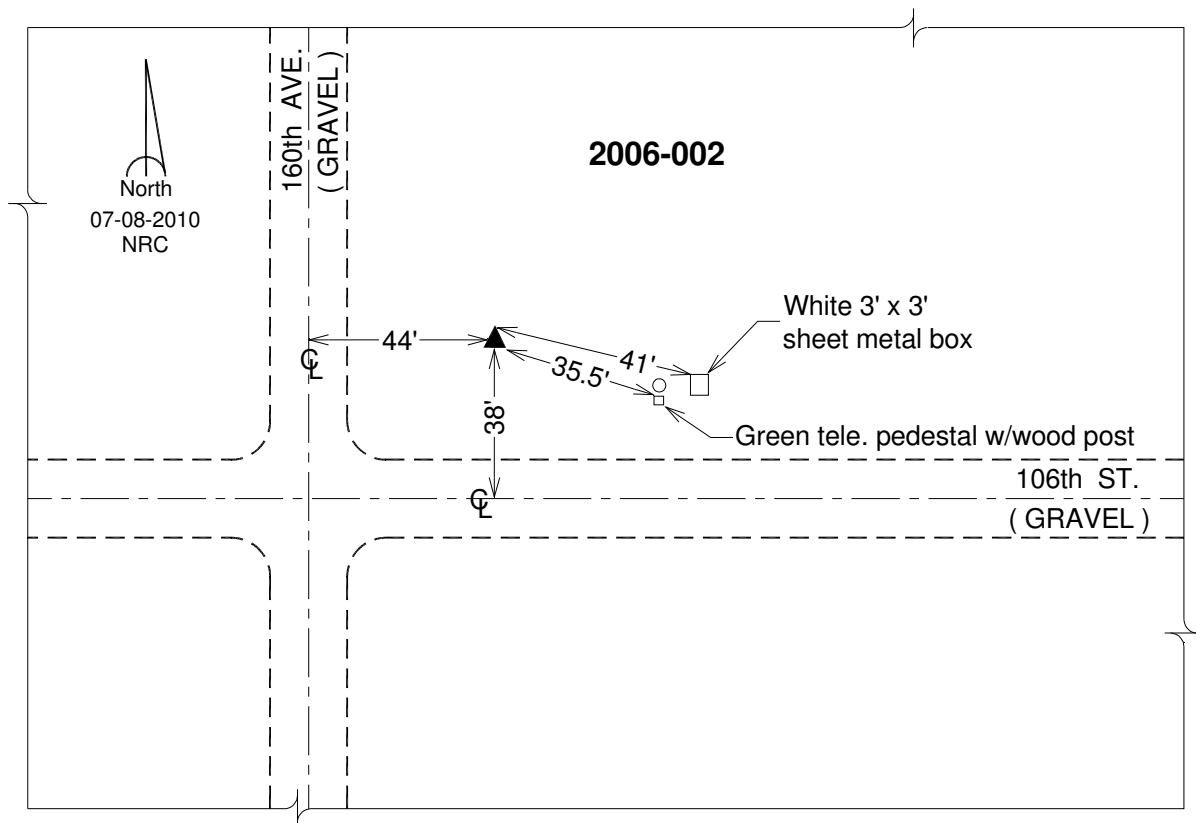
Latitude: **N42°01'32.97674"**

Longitude: **W90°46'54.50991"**

Mapping Angle: **1°47'26"**

Combination Scale Factor: **1.000016987**

Monument Type: 3/4" x 7' aluminum rod monument encased in a PVC sleeve.



This document was prepared by DCI on 05-29-2013 for use by Clinton County, Iowa.

Clinton County, Iowa
 Iowa South Zone (1402)
 Horiz. Datum: **NAD83(NA2011)**
 Vert. Datum: NAVD 1988
 US Survey Feet
2013

Point Name: **3**

Designation: 2010-003 Clinton Co GPS Control Pt (Set by DCI in 2010)

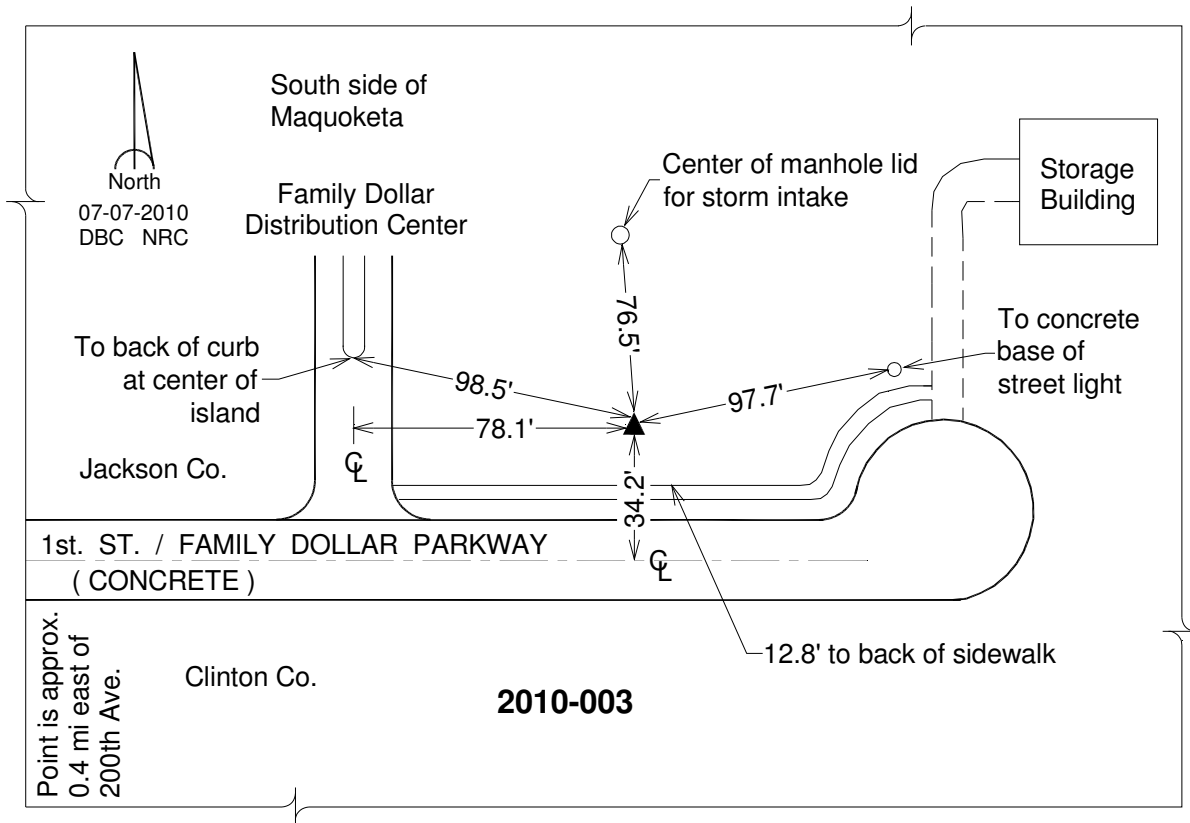
Northing: **753330.60sft** Easting: **2412728.03sft**

Orthometric Height: **710.24sft** Ellipsoid Height: **602.99sft** **Geoid12A**

Latitude: **N42°01'58.59353"** Longitude: **W90°39'24.89478"**

Mapping Angle: **1°52'22"** Combination Scale Factor: **1.000025103**

Monument Type: Berntsen 3/4" Top Security Rod Monument with a 2-1/2" dia. domed survey cap and permanent magnet encased in a white PVC pipe with a NGS style alum. access cover.



This document was prepared by DCI on 05-29-2013 for use by Clinton County, Iowa.

Clinton County, Iowa
Iowa South Zone (1402)
Horiz. Datum: **NAD83(NA2011)**
Vert. Datum: NAVD 1988
US Survey Feet
2013

Point Name: **4**

Designation: 2006-004 Clinton Co Monument (Set by Landmark Engr. in 2006)

Northing: **754131.96sft** Easting: **2439470.87sft**

Orthometric Height: **828.59sft** Ellipsoid Height: **721.12sft** **Geoid12A**

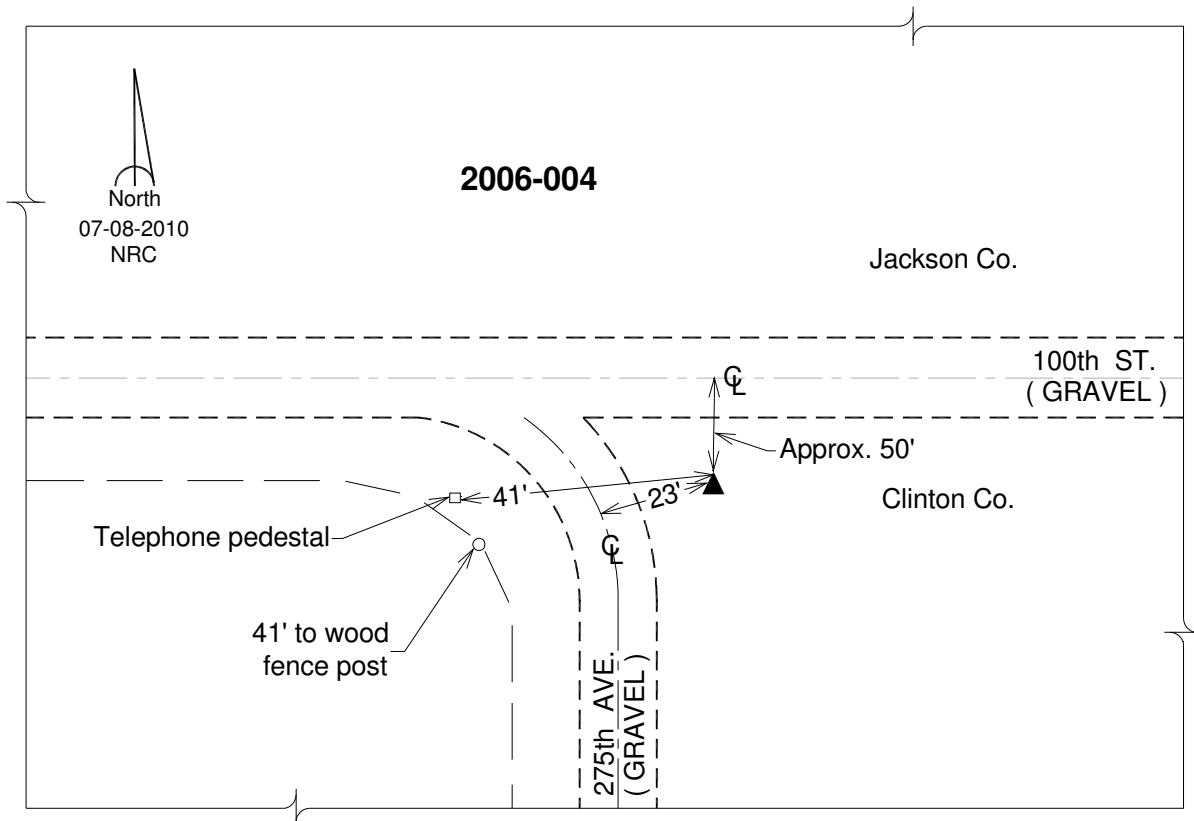
Latitude: **N42°01'57.72271"**

Longitude: **W90°33'30.39011"**

Mapping Angle: **1°56'15"**

Combination Scale Factor: **1.000019405**

Monument Type: 3/4" x 7' aluminum rod monument encased in a PVC sleeve.



This document was prepared by DCI on 05-29-2013 for use by Clinton County, Iowa.

Clinton County, Iowa
Iowa South Zone (1402)
Horiz. Datum: **NAD83(NA2011)**
Vert. Datum: NAVD 1988
US Survey Feet
2013

Point Name: **5**

Designation: 2006-005 Clinton Co Monument (Set by Landmark Engr. in 2006)

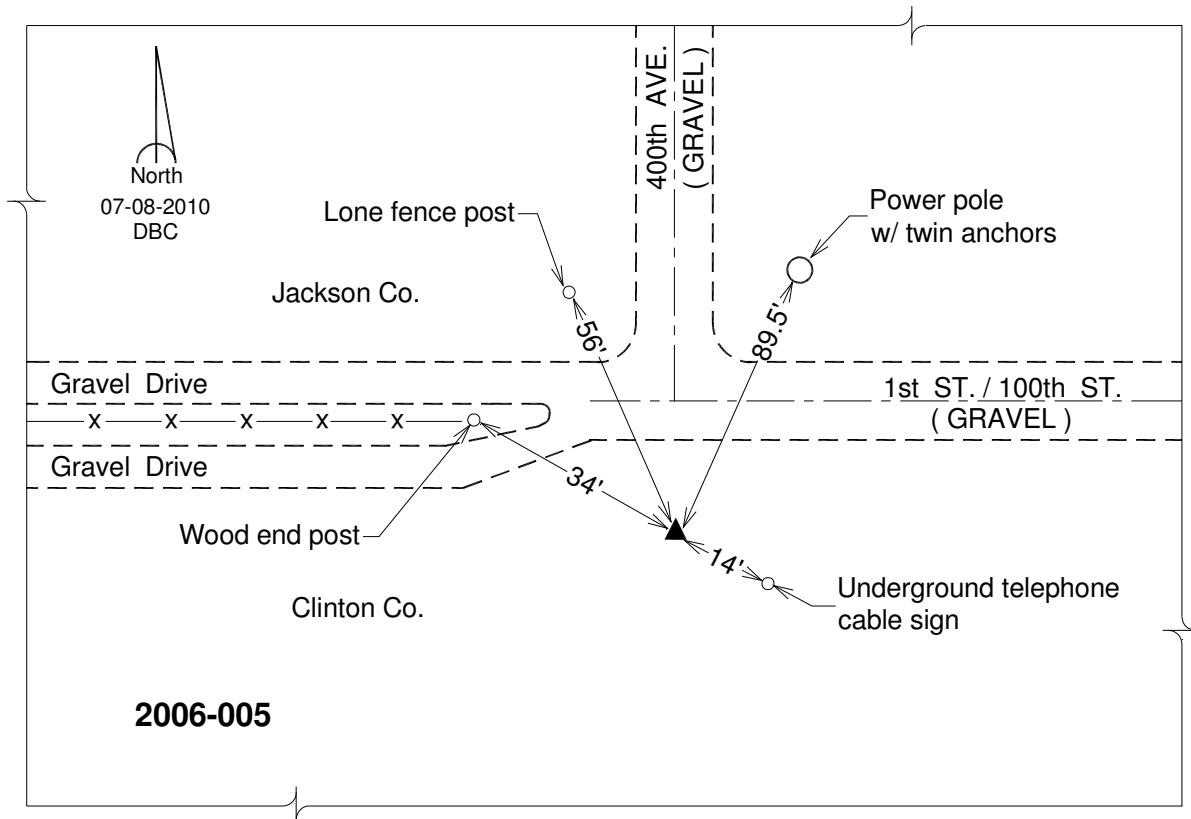
Northing: **755544.31**sft Easting: **2473638.88**sft

Orthometric Height: **662.21**sft Ellipsoid Height: **554.24**sft **Geoid12A**

Latitude: **N42°02'00.00993"** Longitude: **W90°25'57.28032"**

Mapping Angle: **2°01'14"** Combination Scale Factor: **1.000027530**

Monument Type: 3/4" x 7' aluminum rod monument encased in a PVC sleeve.



This document was prepared by DCI on 05-29-2013 for use by Clinton County, Iowa.

Clinton County, Iowa
 Iowa South Zone (1402)
 Horiz. Datum: **NAD83(NA2011)**
 Vert. Datum: NAVD 1988
 US Survey Feet
2013

Point Name: **6**

Designation: 2010-006 Clinton Co GPS Control Pt (Set by DCI in 2010)

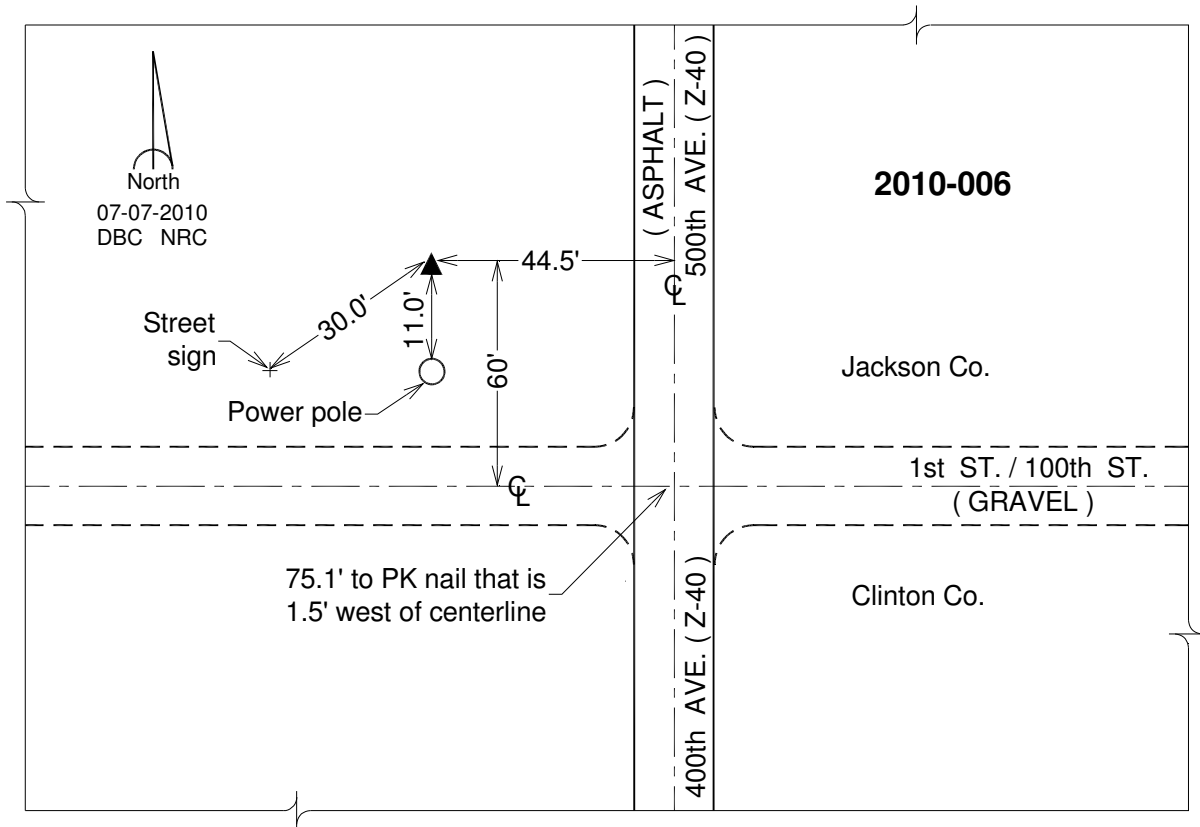
Northing: **756819.58sft** Easting: **2505309.72sft**

Orthometric Height: **833.69sft** Ellipsoid Height: **725.44sft** **Geoid12A**

Latitude: **N42°02'01.35924"** Longitude: **W90°18'57.29527"**

Mapping Angle: **2°05'50"** Combination Scale Factor: **1.000019456**

Monument Type: Berntsen 3/4" Top Security Rod Monument with a 2-1/2" dia. domed survey cap and permanent magnet encased in a white PVC pipe with a NGS style alum. access cover.



This document was prepared by DCI on 05-29-2013 for use by Clinton County, Iowa.

Clinton County, Iowa
Iowa South Zone (1402)
Horiz. Datum: **NAD83(NA2011)**
Vert. Datum: NAVD 1988
US Survey Feet
2013

Point Name: **7**

Designation: 2006-007 Clinton Co Monument (Set by Landmark Engr. in 2006)

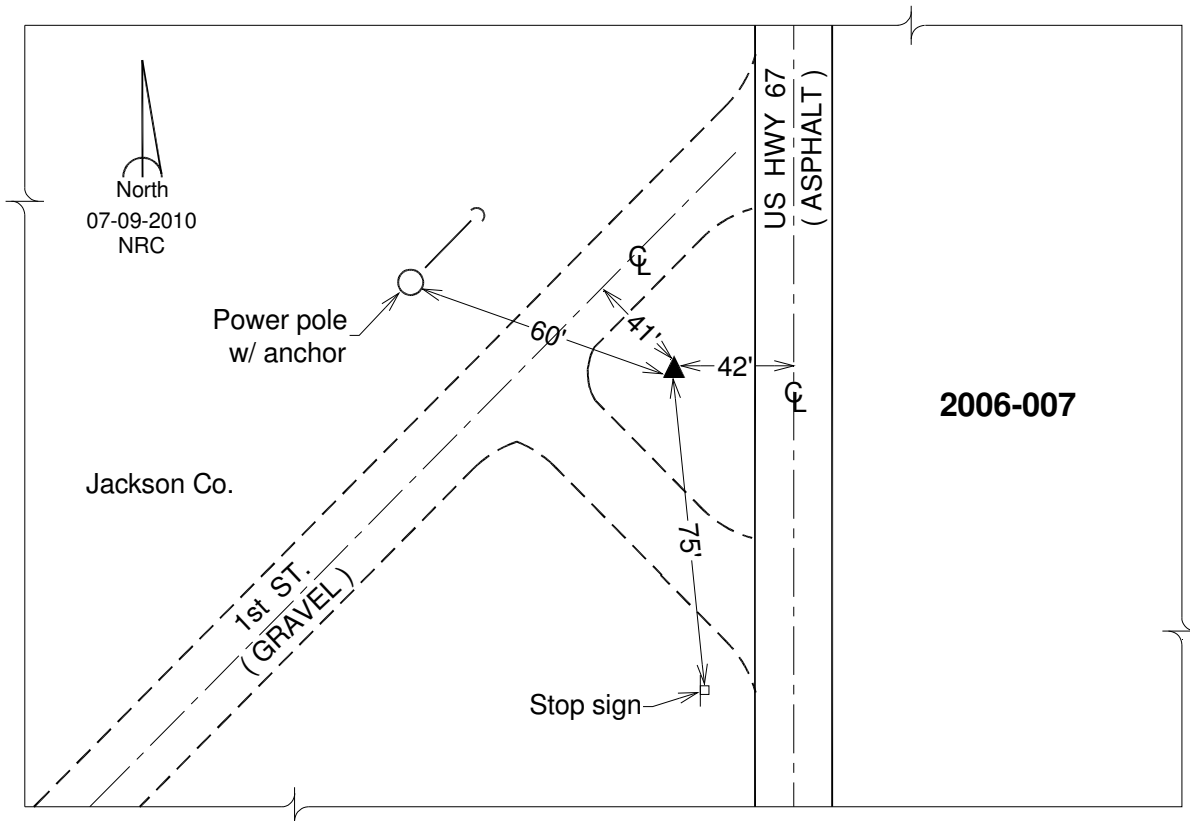
Northing: **759152.71**sft Easting: **2538491.40**sft

Orthometric Height: **663.72**sft Ellipsoid Height: **555.15**sft **Geoid12A**

Latitude: **N42°02'12.16424"** Longitude: **W90°11'36.76859"**

Mapping Angle: **2°10'41"** Combination Scale Factor: **1.000028346**

Monument Type: 3/4" x 7' aluminum rod monument encased in a PVC sleeve.



This document was prepared by DCI on 05-29-2013 for use by Clinton County, Iowa.

Clinton County, Iowa
 Iowa South Zone (1402)
 Horiz. Datum: **NAD83(NA2011)**
 Vert. Datum: NAVD 1988
 US Survey Feet
2013

Point Name: **8**

Designation: JONES CO. GPS CONTROL PT. 2004-068 (Set by DCI in 2004)

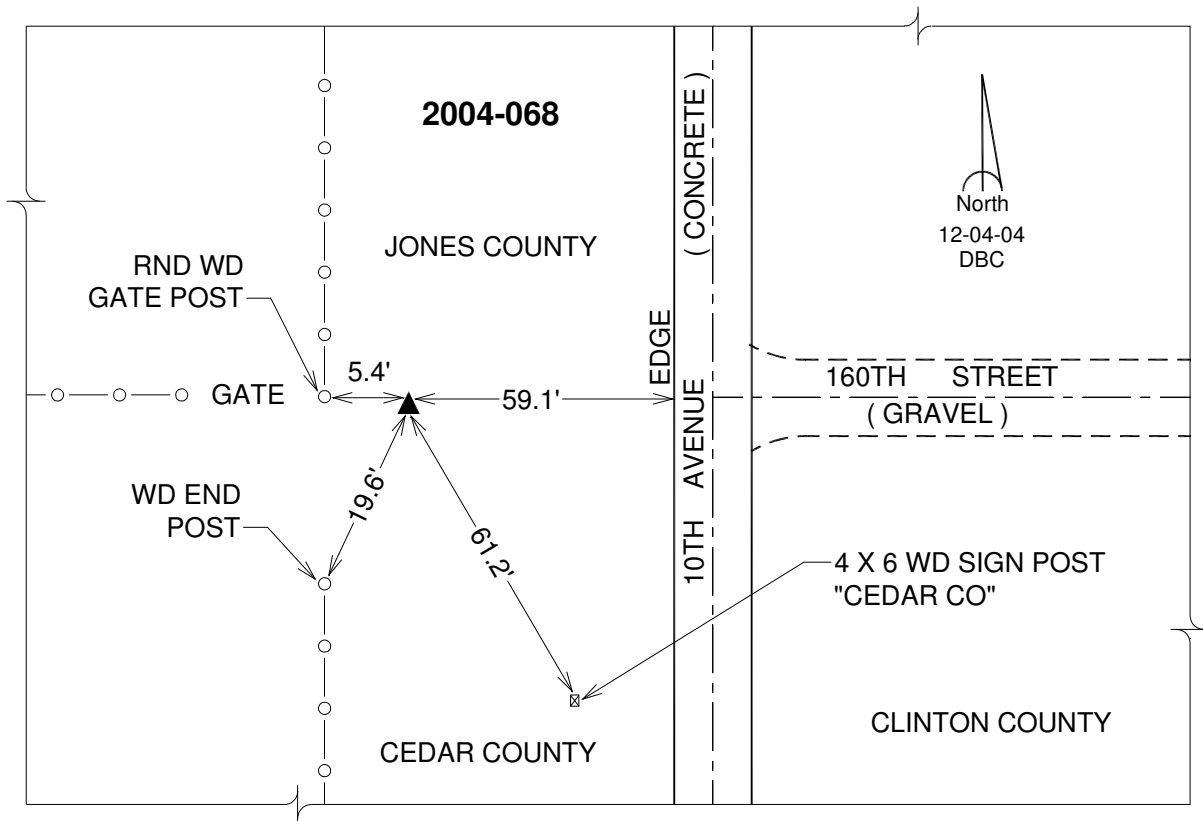
Northing: **719688.63sft** Easting: **2347998.39sft**

Orthometric Height: **720.45sft** Ellipsoid Height: **613.44sft** **Geoid12A**

Latitude: **N41°56'46.43196"** Longitude: **W90°53'55.52187"**

Mapping Angle: **1°42'48"** Combination Scale Factor: **1.000003721**

Monument Type: Berntsen Top Security Rod Monument with a 2-1/2" dia. domed cap and a permanent magnet encased in a 5" dia. PVC pipe with a NGS style aluminum access cover.



This document was prepared by DCI on 05-29-2013 for use by Clinton County, Iowa.

Clinton County, Iowa
Iowa South Zone (1402)
Horiz. Datum: **NAD83(NA2011)**
Vert. Datum: NAVD 1988
US Survey Feet
2013

Point Name: **9**

Designation: 2006-009 Clinton Co Monument (Set by Landmark Engr. in 2006)

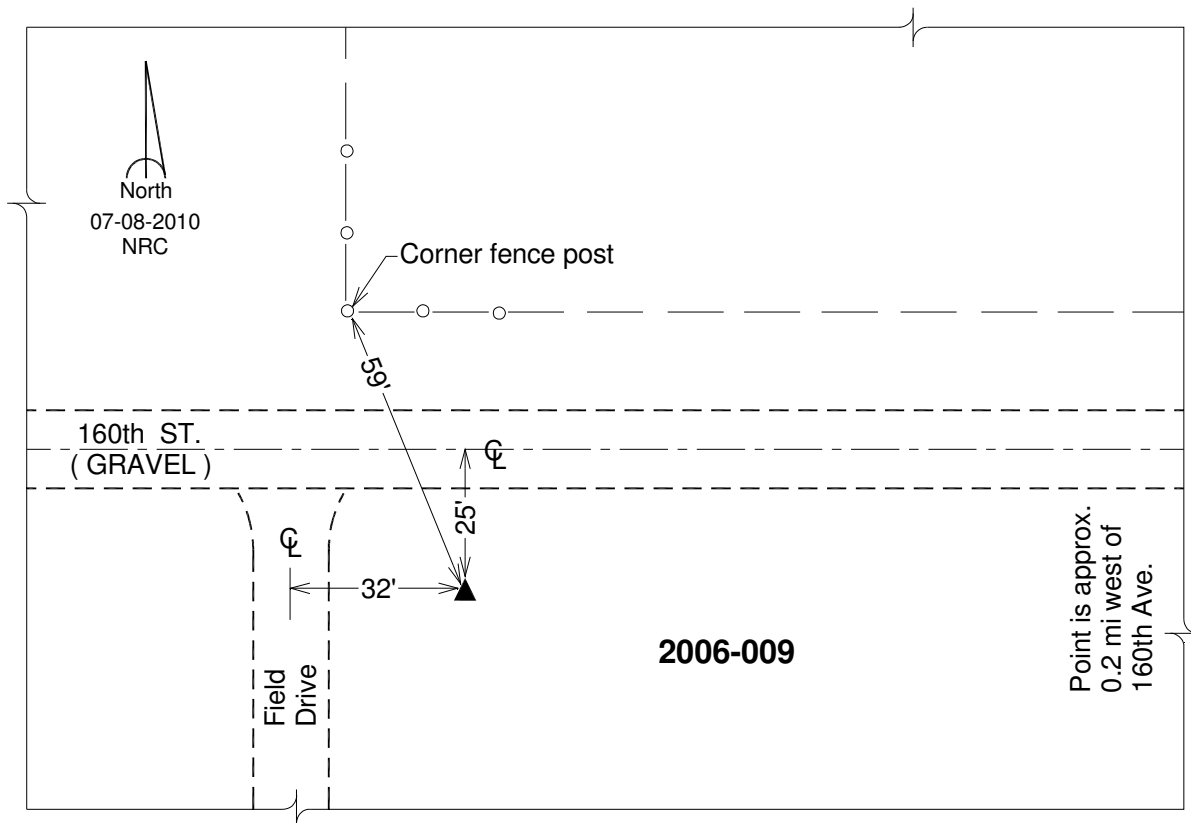
Northing: **720338.73sft** Easting: **2378566.87sft**

Orthometric Height: **722.66sft** Ellipsoid Height: **615.54sft** **Geoid12A**

Latitude: **N41°56'43.62683"** Longitude: **W90°47'10.95257"**

Mapping Angle: **1°47'15"** Combination Scale Factor: **1.000003443**

Monument Type: 3/4" x 7' aluminum rod monument encased in a PVC sleeve.



This document was prepared by DCI on 05-29-2013 for use by Clinton County, Iowa.

Clinton County, Iowa
Iowa South Zone (1402)
Horiz. Datum: **NAD83(NA2011)**
Vert. Datum: NAVD 1988
US Survey Feet
2013

Point Name: **10**

Designation: 2006-010 Clinton Co Monument (Set by Landmark Engr. in 2006)

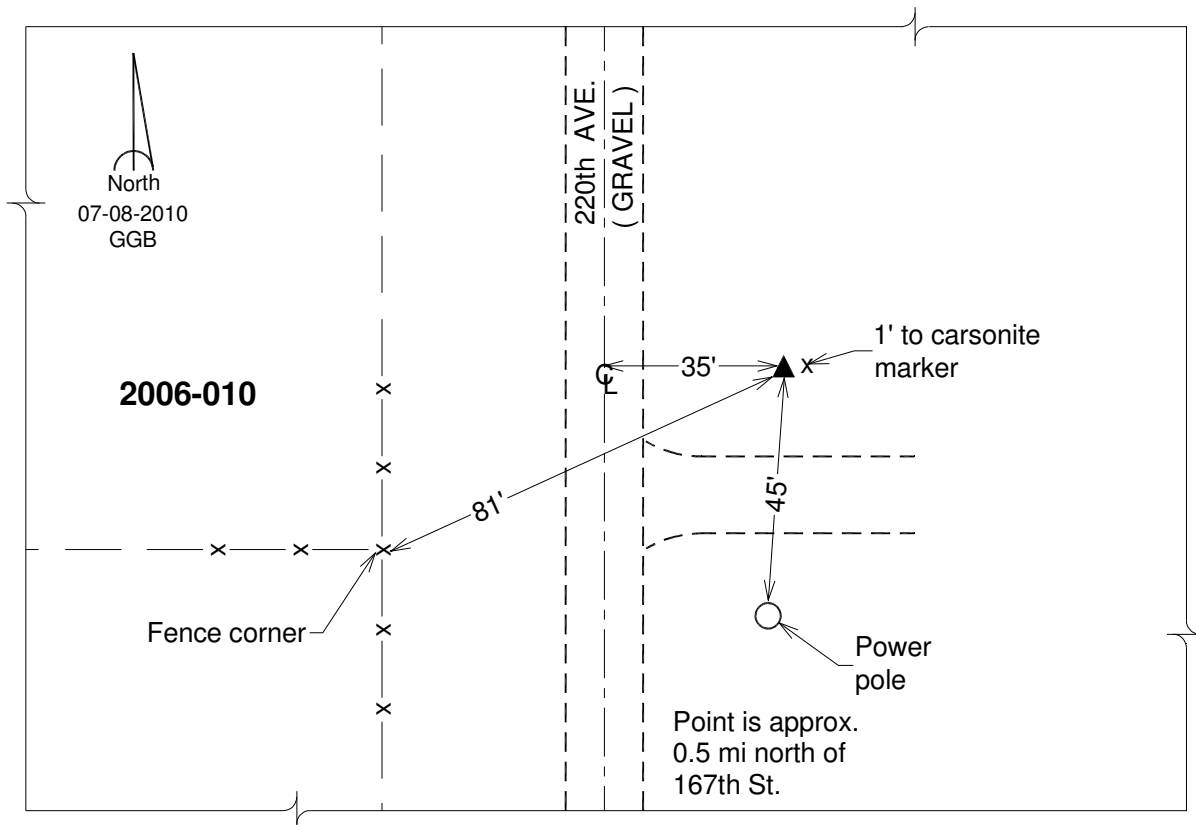
Northing: **720049.14sft** Easting: **2411709.22sft**

Orthometric Height: **822.11sft** Ellipsoid Height: **714.85sft** **Geoid12A**

Latitude: **N41°56'30.32618"** Longitude: **W90°39'52.75910"**

Mapping Angle: **1°52'04"** Combination Scale Factor: **0.999997867**

Monument Type: 3/4" x 7' aluminum rod monument encased in a PVC sleeve.



This document was prepared by DCI on 05-29-2013 for use by Clinton County, Iowa.

Clinton County, Iowa
Iowa South Zone (1402)
Horiz. Datum: **NAD83(NA2011)**
Vert. Datum: NAVD 1988
US Survey Feet
2013

Point Name: **11**

Designation: 2010-011 Clinton Co GPS Control Pt (Set by DCI in 2010)

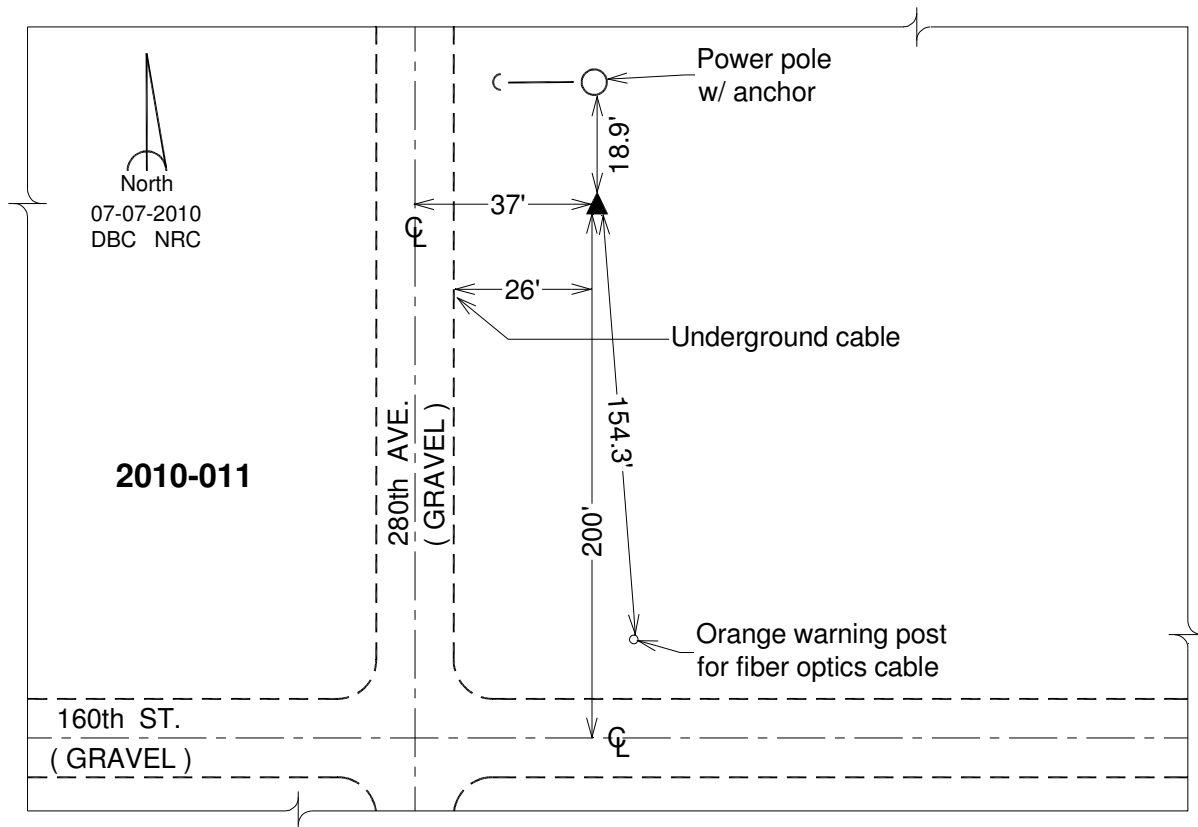
Northing: **722665.24sft** Easting: **2443360.55sft**

Orthometric Height: **789.98sft** Ellipsoid Height: **682.43sft** **Geoid12A**

Latitude: **N41°56'45.75575"** Longitude: **W90°32'53.02786"**

Mapping Angle: **1°56'40"** Combination Scale Factor: **1.000000386**

Monument Type: Berntsen 3/4" Top Security Rod Monument with a 2-1/2" dia. domed survey cap and permanent magnet encased in a white PVC pipe with a NGS style alum. access cover.



This document was prepared by DCI on 05-29-2013 for use by Clinton County, Iowa.

Clinton County, Iowa
Iowa South Zone (1402)
Horiz. Datum: **NAD83(NA2011)**
Vert. Datum: NAVD 1988
US Survey Feet
2013

Point Name: **12**

Designation: 2006-012 Clinton Co Monument (Set by Landmark Engr. in 2006)

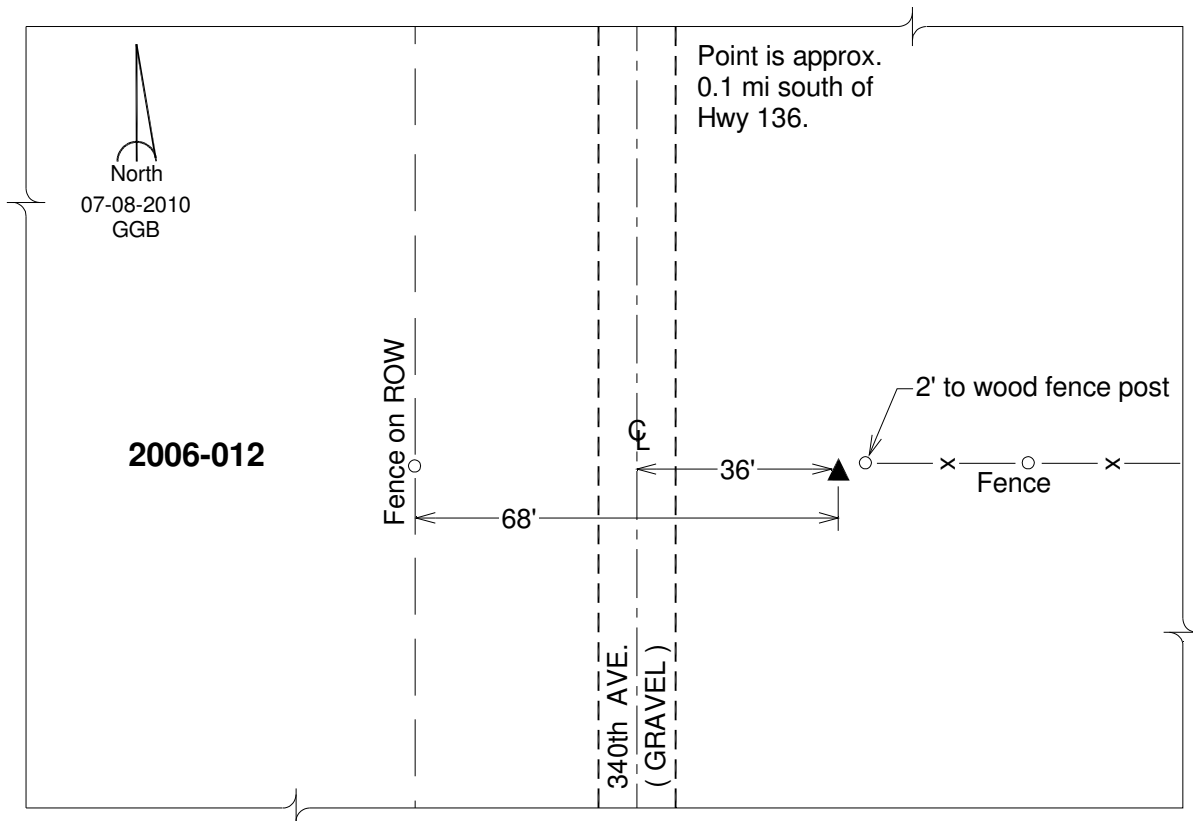
Northing: **729060.32sft** Easting: **2474830.18sft**

Orthometric Height: **744.62sft** Ellipsoid Height: **636.63sft** **Geoid12A**

Latitude: **N41°57'38.13653"** Longitude: **W90°25'53.88132"**

Mapping Angle: **2°01'16"** Combination Scale Factor: **1.000005914**

Monument Type: 3/4" x 7' aluminum rod monument encased in a PVC sleeve.



This document was prepared by DCI on 05-29-2013 for use by Clinton County, Iowa.

Clinton County, Iowa
Iowa South Zone (1402)
Horiz. Datum: **NAD83(NA2011)**
Vert. Datum: NAVD 1988
US Survey Feet
2013

Point Name: **13**

Designation: 2006-013 Clinton Co Monument (Set by Landmark Engr. in 2006)

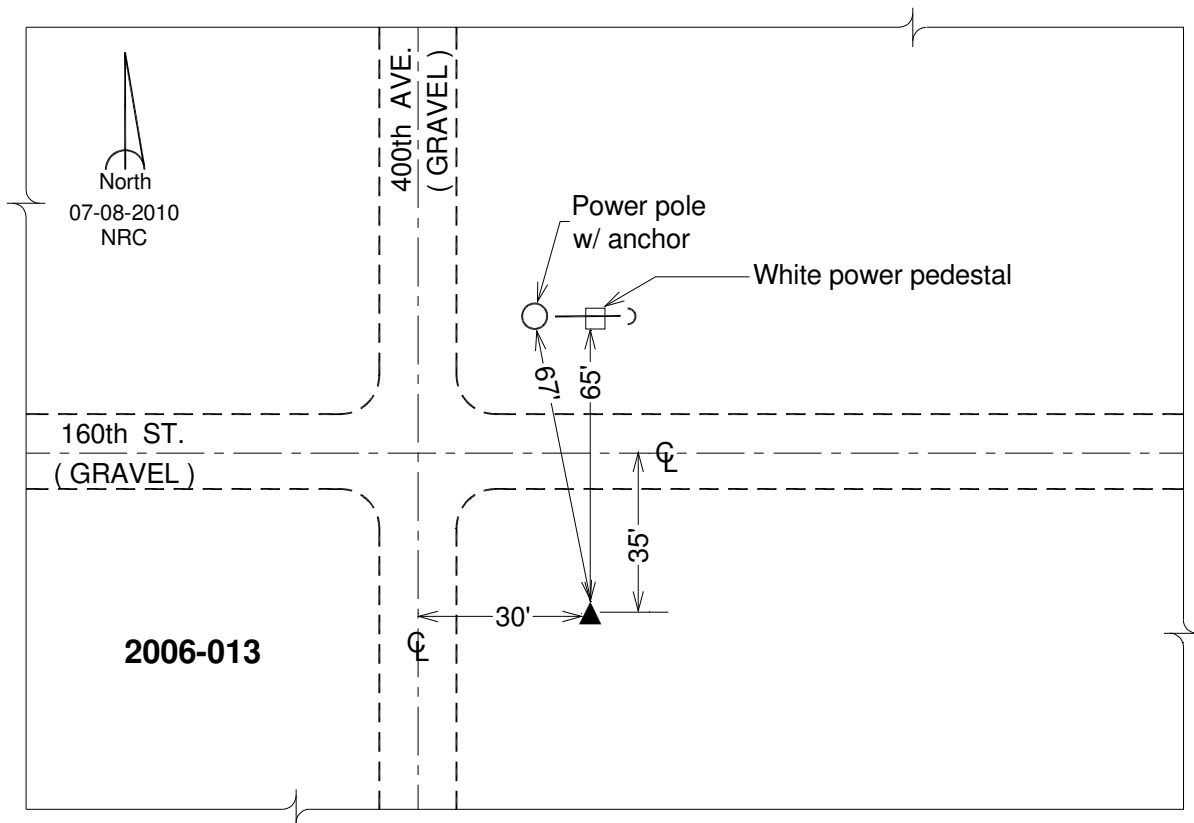
Northing: **724867.57sft** Easting: **2506693.89sft**

Orthometric Height: **788.25sft** Ellipsoid Height: **679.98sft** **Geoid12A**

Latitude: **N41°56'45.43258"** Longitude: **W90°18'54.46513"**

Mapping Angle: **2°05'52"** Combination Scale Factor: **1.000000483**

Monument Type: 3/4" x 7' aluminum rod monument encased in a PVC sleeve.



This document was prepared by DCI on 05-29-2013 for use by Clinton County, Iowa.

Clinton County, Iowa
 Iowa South Zone (1402)
 Horiz. Datum: **NAD83(NA2011)**
 Vert. Datum: NAVD 1988
 US Survey Feet
2013

Point Name: **14**

Designation: 2006-014 Clinton Co Monument (Set by Landmark Engr. in 2006)

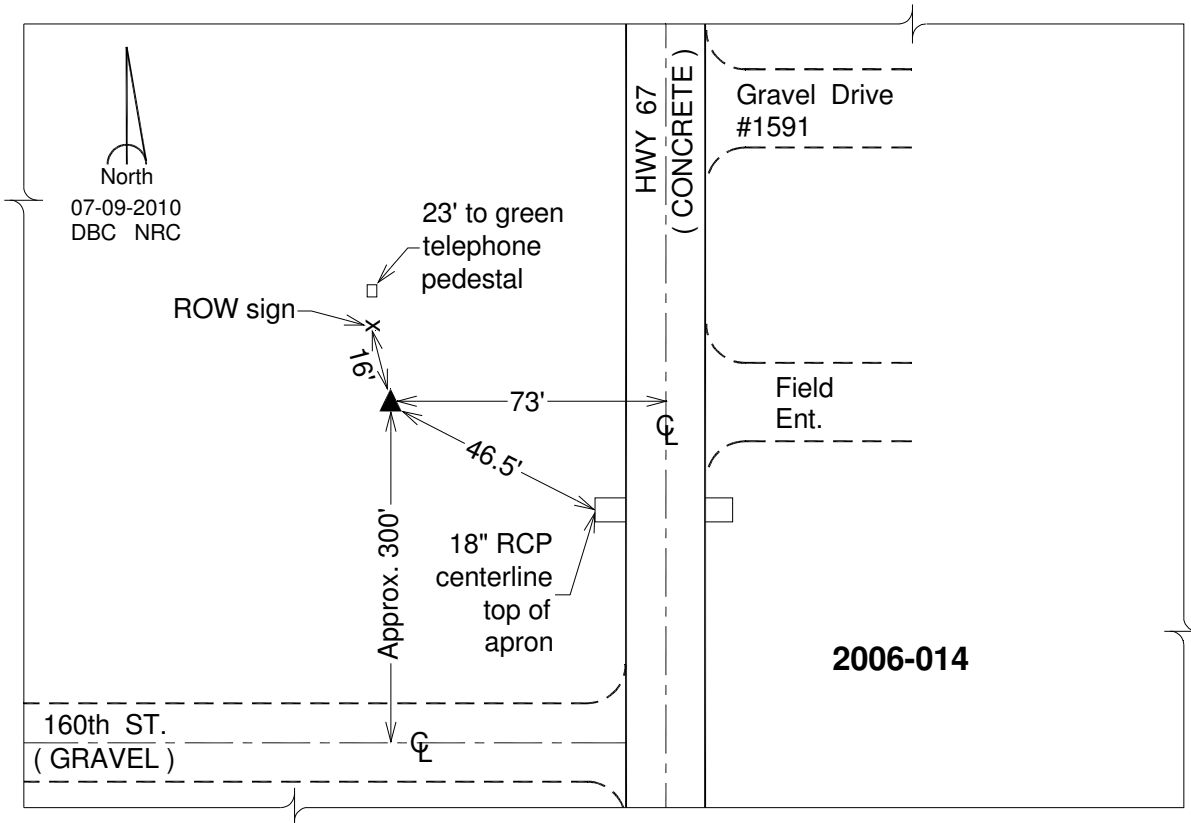
Northing: **726452.85sft** Easting: **2538209.60sft**

Orthometric Height: **684.14sft** Ellipsoid Height: **575.56sft** **Geoid12A**

Latitude: **N41°56'49.47780"** Longitude: **W90°11'56.93928"**

Mapping Angle: **2°10'27"** Combination Scale Factor: **1.000005721**

Monument Type: 3/4" x 7' aluminum rod monument encased in a PVC sleeve.



This document was prepared by DCI on 05-29-2013 for use by Clinton County, Iowa.

Clinton County, Iowa
Iowa South Zone (1402)
Horiz. Datum: **NAD83(NA2011)**
Vert. Datum: NAVD 1988
US Survey Feet
2013

Point Name: **15**

Designation: 2006-015 Clinton Co Monument (Set by Landmark Engr. in 2006)

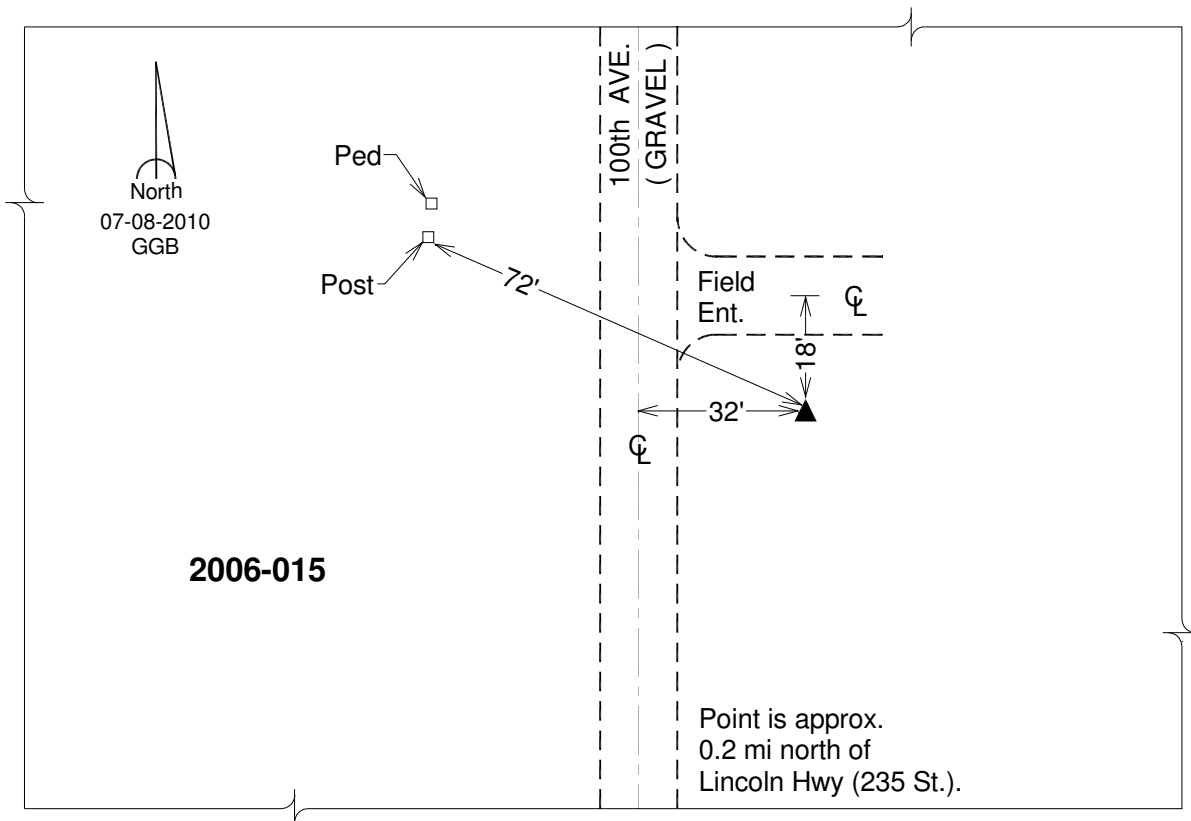
Northing: **686501.41**sft Easting: **2349152.29**sft

Orthometric Height: **727.48**sft Ellipsoid Height: **620.37**sft **Geoid12A**

Latitude: **N41°51'18.38627"** Longitude: **W90°53'53.39367"**

Mapping Angle: **1°42'50"** Combination Scale Factor: **0.999983932**

Monument Type: 3/4" x 7' aluminum rod monument encased in a PVC sleeve.



This document was prepared by DCI on 05-29-2013 for use by Clinton County, Iowa.

Clinton County, Iowa
Iowa South Zone (1402)
Horiz. Datum: **NAD83(NA2011)**
Vert. Datum: NAVD 1988
US Survey Feet
2013

Point Name: **16**

Designation: 2006-016 Clinton Co Monument (Set by Landmark Engr. in 2006)

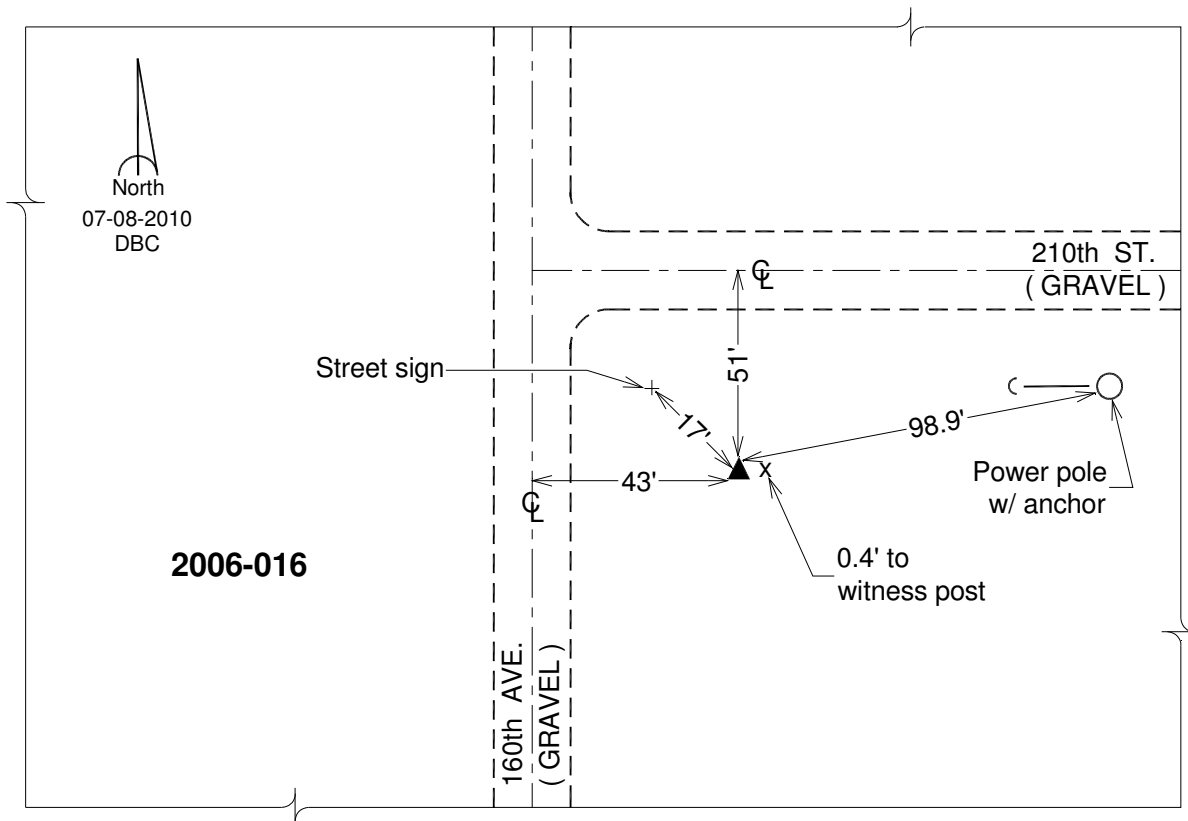
Northing: **693845.38**sft Easting: **2380730.91**sft

Orthometric Height: **694.54**sft Ellipsoid Height: **587.36**sft **Geoid12A**

Latitude: **N41°52'21.36406"** Longitude: **W90°46'53.28595"**

Mapping Angle: **1°47'27"** Combination Scale Factor: **0.999989045**

Monument Type: 3/4" x 7' aluminum rod monument encased in a PVC sleeve.



This document was prepared by DCI on 05-29-2013 for use by Clinton County, Iowa.

Clinton County, Iowa
Iowa South Zone (1402)
Horiz. Datum: **NAD83(NA2011)**
Vert. Datum: NAVD 1988
US Survey Feet
2013

Point Name: **17**

Designation: 2006-017 Clinton Co Monument (Set by Landmark Engr. in 2006)

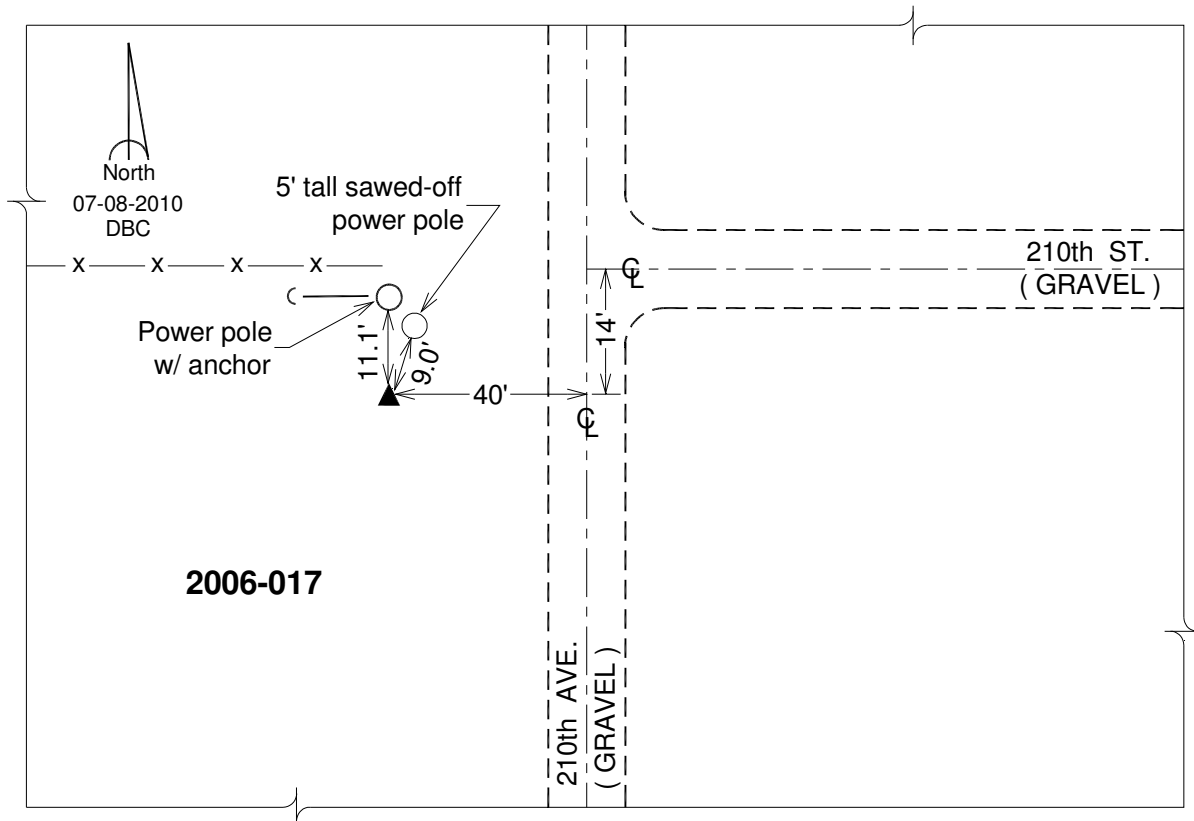
Northing: **694704.68**sft Easting: **2407039.21**sft

Orthometric Height: **761.74**sft Ellipsoid Height: **654.46**sft **Geoid12A**

Latitude: **N41°52'21.58303"** Longitude: **W90°41'05.36995"**

Mapping Angle: **1°51'16"** Combination Scale Factor: **0.999985856**

Monument Type: 3/4" x 7' aluminum rod monument encased in a PVC sleeve.



This document was prepared by DCI on 05-29-2013 for use by Clinton County, Iowa.

Clinton County, Iowa
Iowa South Zone (1402)
Horiz. Datum: **NAD83(NA2011)**
Vert. Datum: NAVD 1988
US Survey Feet
2013

Point Name: **18**

Designation: 2006-018 Clinton Co Monument (Set by Landmark Engr. in 2006)

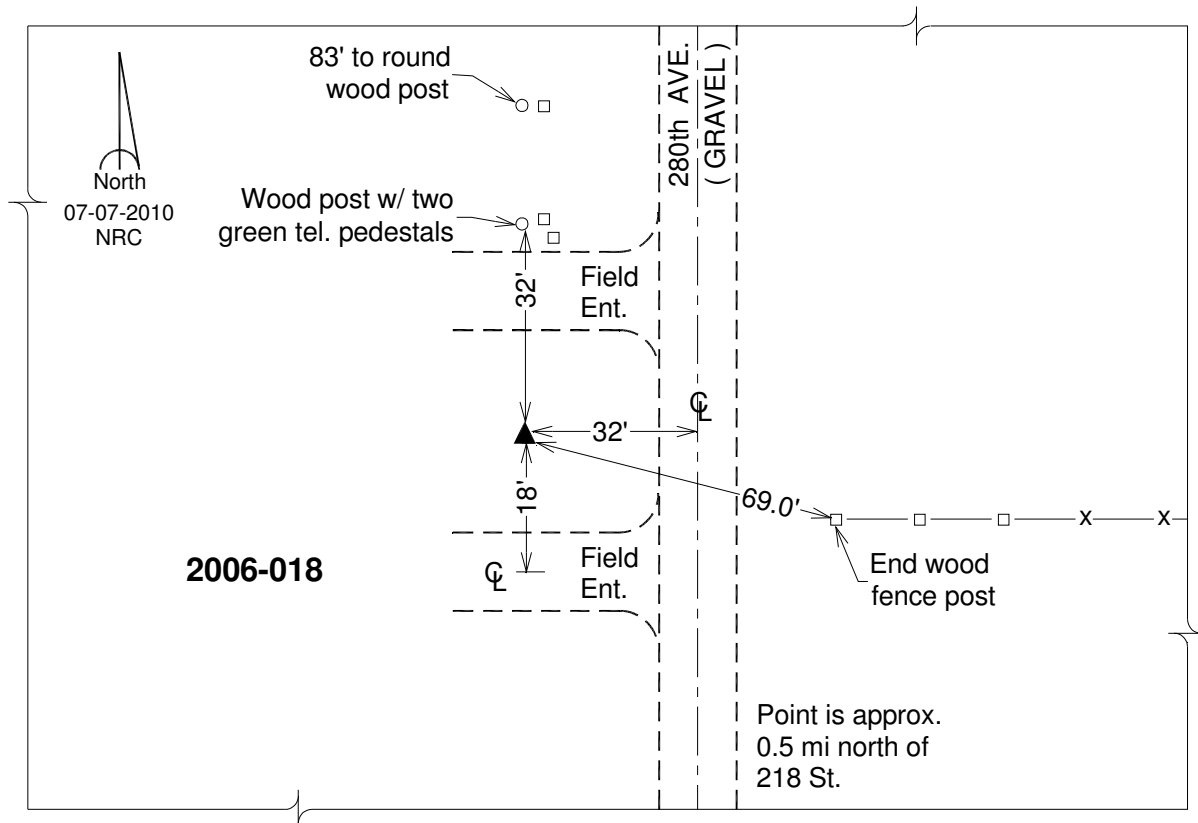
Northing: **690754.42sft** Easting: **2444267.52sft**

Orthometric Height: **693.10sft** Ellipsoid Height: **585.48sft** **Geoid12A**

Latitude: **N41°51'30.39136"** Longitude: **W90°32'55.35765"**

Mapping Angle: **1°56'38"** Combination Scale Factor: **0.999986264**

Monument Type: 3/4" x 7' aluminum rod monument encased in a PVC sleeve.



This document was prepared by DCI on 05-29-2013 for use by Clinton County, Iowa.

Clinton County, Iowa
Iowa South Zone (1402)
Horiz. Datum: **NAD83(NA2011)**
Vert. Datum: NAVD 1988
US Survey Feet
2013

Point Name: **19**

Designation: 2010-019 Clinton Co GPS Control Pt (Set by DCI in 2010)

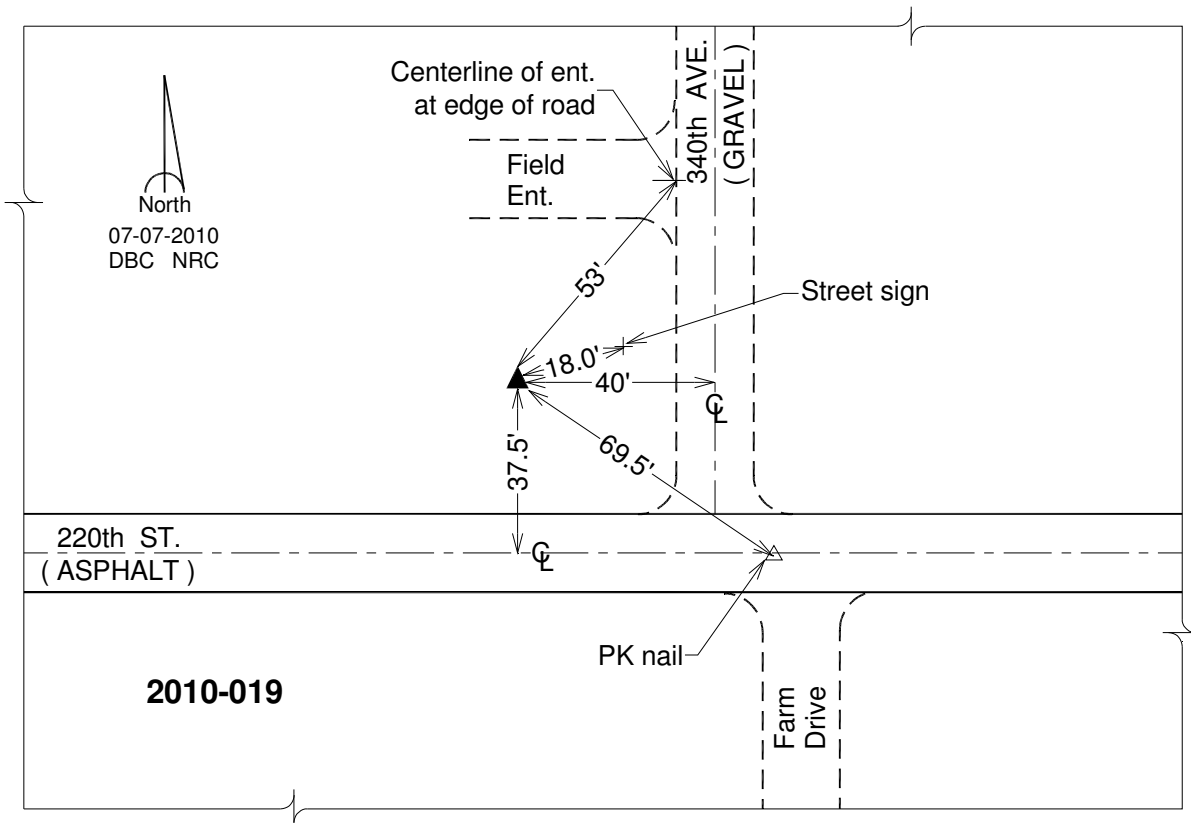
Northing: **692091.87**sft Easting: **2475947.10**sft

Orthometric Height: **658.80**sft Ellipsoid Height: **550.83**sft **Geoid12A**

Latitude: **N41°51'32.77023"** Longitude: **W90°25'56.36027"**

Mapping Angle: **2°01'14"** Combination Scale Factor: **0.999988050**

Monument Type: Berntsen 3/4" Top Security Rod Monument with a 2-1/2" dia. domed survey cap and permanent magnet encased in a white PVC pipe with a NGS style alum. access cover.



This document was prepared by DCI on 05-29-2013 for use by Clinton County, Iowa.

Clinton County, Iowa
Iowa South Zone (1402)
Horiz. Datum: **NAD83(NA2011)**
Vert. Datum: NAVD 1988
US Survey Feet
2013

Point Name: **20**

Designation: 2005-506 City of Clinton, Iowa GPS Control Pt (Set by DCI in 2005)

Northing: **687261.05sft** Easting: **2497321.09sft**

Orthometric Height: **711.95sft** Ellipsoid Height: **603.73sft** **Geoid12A**

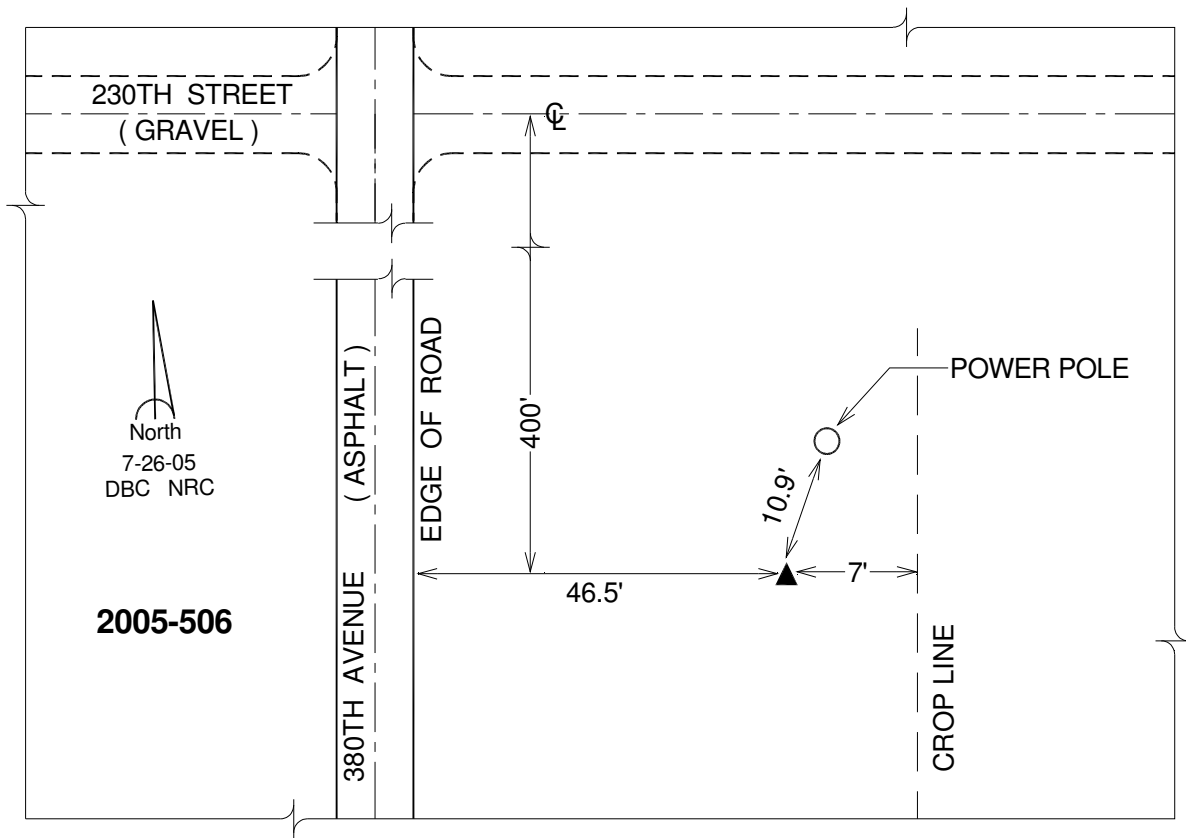
Latitude: **N41°50'37.53717"**

Longitude: **W90°21'16.40021"**

Mapping Angle: **2°04'19"**

Combination Scale Factor: **0.999982481**

Monument Type: Berntsen Top Security Rod Monument with a 2-1/2" dia. domed survey cap and permanent magnet encased in a 5" dia. PVC pipe with a NGS style alum. access cover.



This document was prepared by DCI on 05-29-2013 for use by Clinton County, Iowa.

Clinton County, Iowa
Iowa South Zone (1402)
Horiz. Datum: **NAD83(NA2011)**
Vert. Datum: NAVD 1988
US Survey Feet
2013

Point Name: **21**

Designation: 2006-021 Clinton Co Monument (Set by Landmark Engr. in 2006)

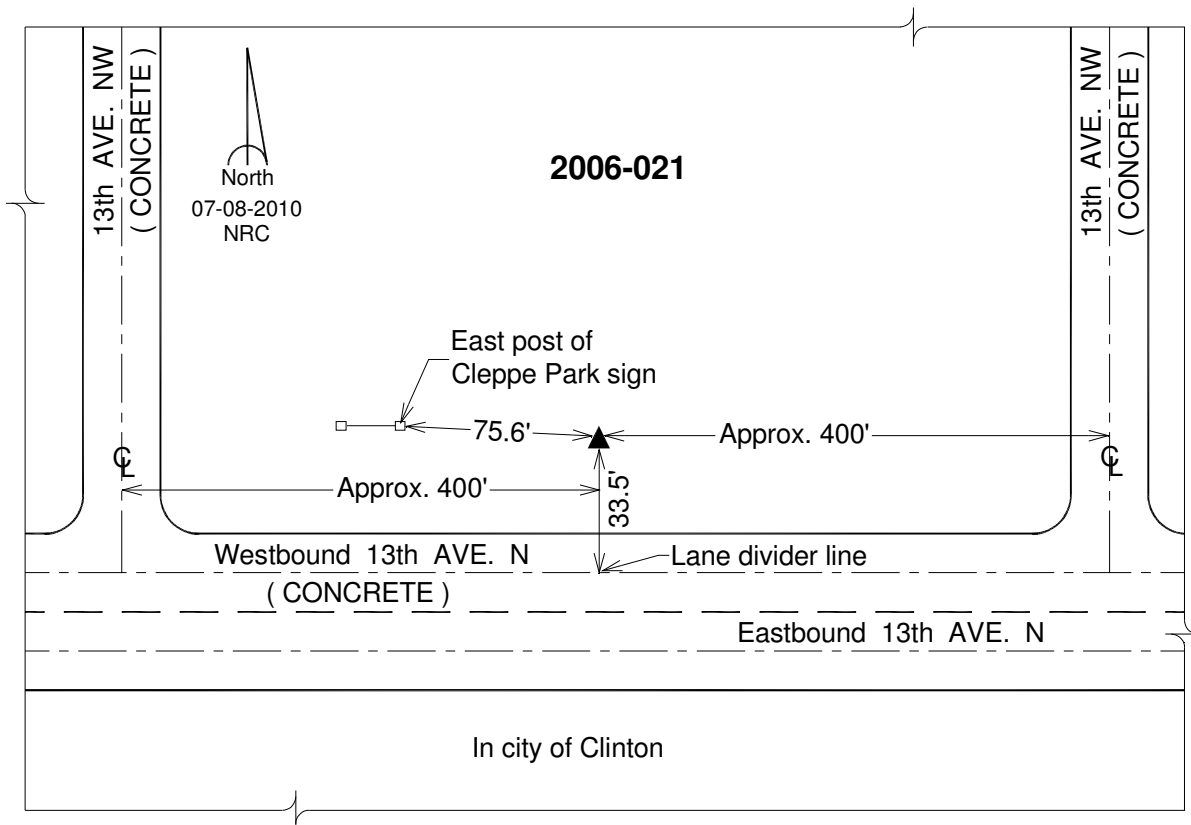
Northing: **694593.80**sft Easting: **2540502.10**sft

Orthometric Height: **661.57**sft Ellipsoid Height: **552.95**sft **Geoid12A**

Latitude: **N41°51'34.11464"** Longitude: **W90°11'42.63879"**

Mapping Angle: **2°10'37"** Combination Scale Factor: **0.999988024**

Monument Type: 3/4" x 7' aluminum rod monument encased in a PVC sleeve.



This document was prepared by DCI on 05-29-2013 for use by Clinton County, Iowa.

Clinton County, Iowa
Iowa South Zone (1402)
Horiz. Datum: **NAD83(NA2011)**
Vert. Datum: NAVD 1988
US Survey Feet
2013

Point Name: **22**

Designation: 2005-601 Scott Co GPS Control Pt (Set by DCI in 2005)

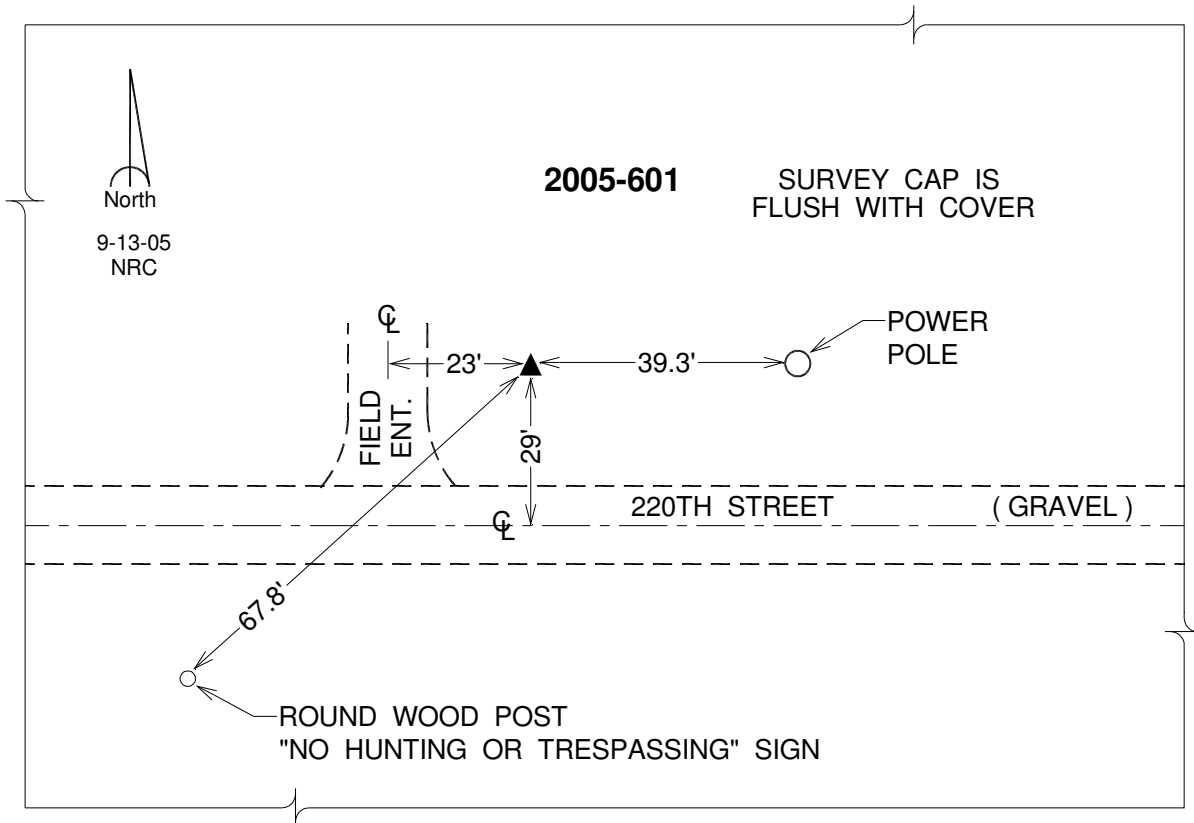
Northing: **656037.82sft** Easting: **2348166.44sft**

Orthometric Height: **757.56sft** Ellipsoid Height: **650.38sft** **Geoid12A**

Latitude: **N41°46'17.85641"** Longitude: **W90°54'18.42184"**

Mapping Angle: **1°42'33"** Combination Scale Factor: **0.999966909**

Monument Type: Berntsen Top Security Rod Monument with a 2-1/2" dia. domed survey cap and permanent magnet encased in a 5" dia. PVC pipe with a NGS style alum. access cover.



This document was prepared by DCI on 05-29-2013 for use by Clinton County, Iowa.

Clinton County, Iowa
 Iowa South Zone (1402)
 Horiz. Datum: **NAD83(NA2011)**
 Vert. Datum: NAVD 1988
 US Survey Feet
2013

Point Name: **23**

Designation: 2005-603 Scott Co GPS Control Pt (Set by DCI in 2005)

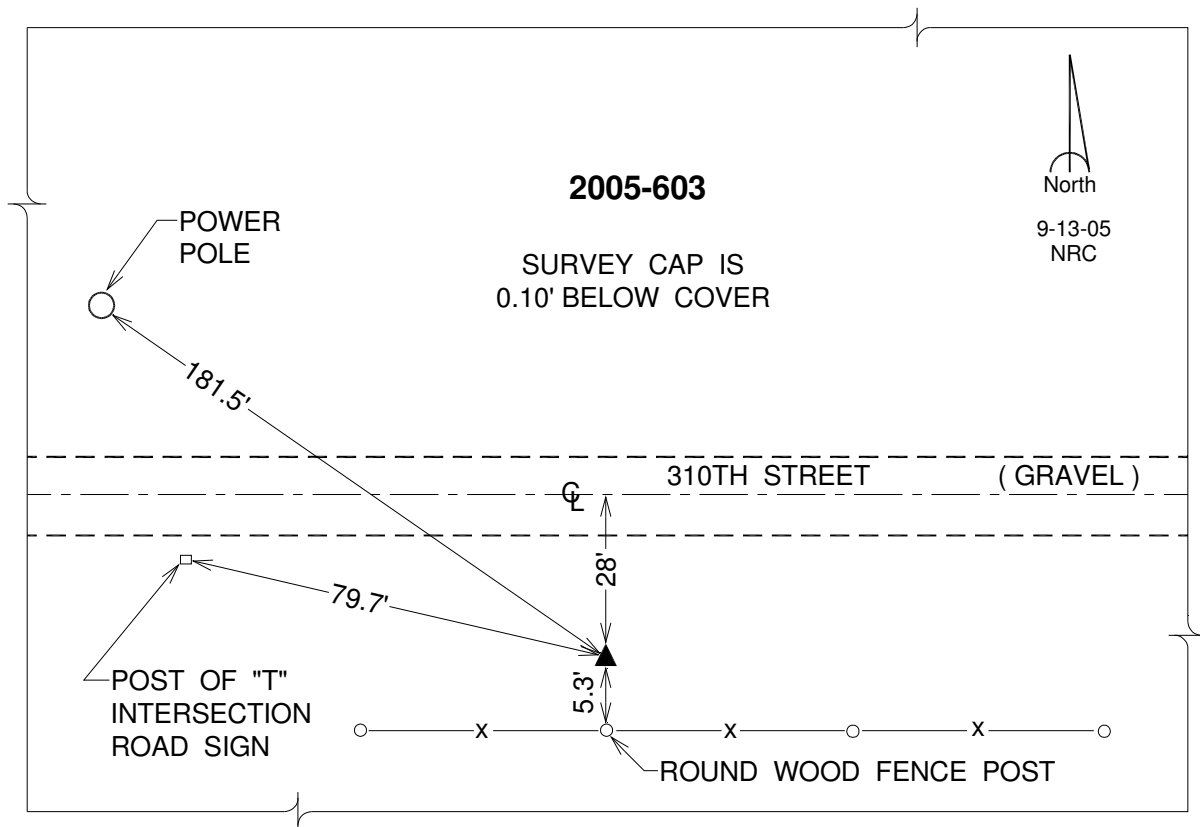
Northing: **651441.19sft** Easting: **2379851.74sft**

Orthometric Height: **742.58sft** Ellipsoid Height: **635.22sft** **Geoid12A**

Latitude: **N41°45'22.92104"** Longitude: **W90°47'22.36295"**

Mapping Angle: **1°47'07"** Combination Scale Factor: **0.999965013**

Monument Type: Berntsen Top Security Rod Monument with a 2-1/2" dia. domed survey cap and permanent magnet encased in a 5" dia. PVC pipe with a NGS style alum. access cover.



This document was prepared by DCI on 05-29-2013 for use by Clinton County, Iowa.

Clinton County, Iowa
Iowa South Zone (1402)
Horiz. Datum: **NAD83(NA2011)**
Vert. Datum: NAVD 1988
US Survey Feet
2013

Point Name: **24**

Designation: 2005-642 Scott Co GPS Control Pt (Set by DCI in 2005)

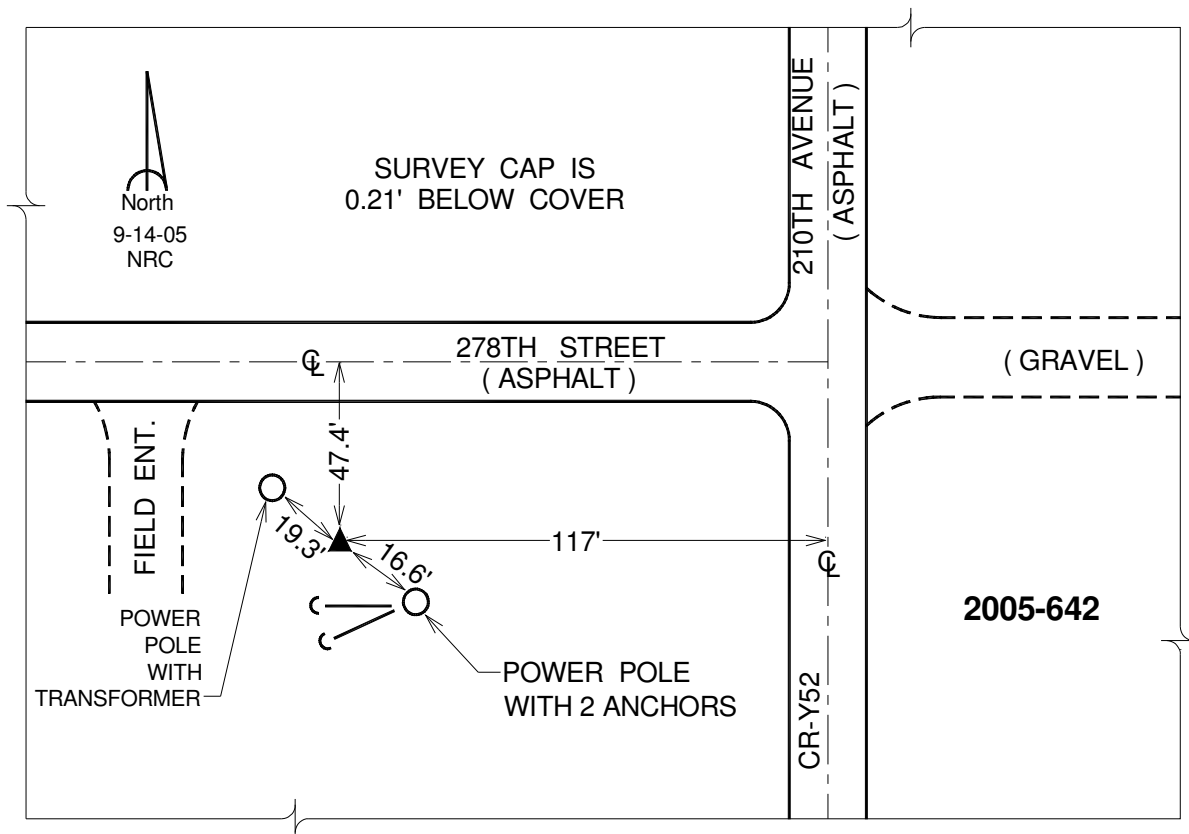
Northing: **655956.02sft** Easting: **2408149.70sft**

Orthometric Height: **640.80sft** Ellipsoid Height: **533.30sft** **Geoid12A**

Latitude: **N41°45'58.62467"** Longitude: **W90°41'07.26968"**

Mapping Angle: **1°51'14"** Combination Scale Factor: **0.999971570**

Monument Type: Berntsen Top Security Rod Monument with a 2-1/2" dia. domed survey cap and permanent magnet encased in a 5" dia. PVC pipe with a NGS style alum. access cover.



This document was prepared by DCI on 05-29-2013 for use by Clinton County, Iowa.

Clinton County, Iowa
Iowa South Zone (1402)
Horiz. Datum: **NAD83(NA2011)**
Vert. Datum: NAVD 1988
US Survey Feet
2013

Point Name: **25**

Designation: 2005-611 Scott Co GPS Control Pt (Set by DCI in 2005)

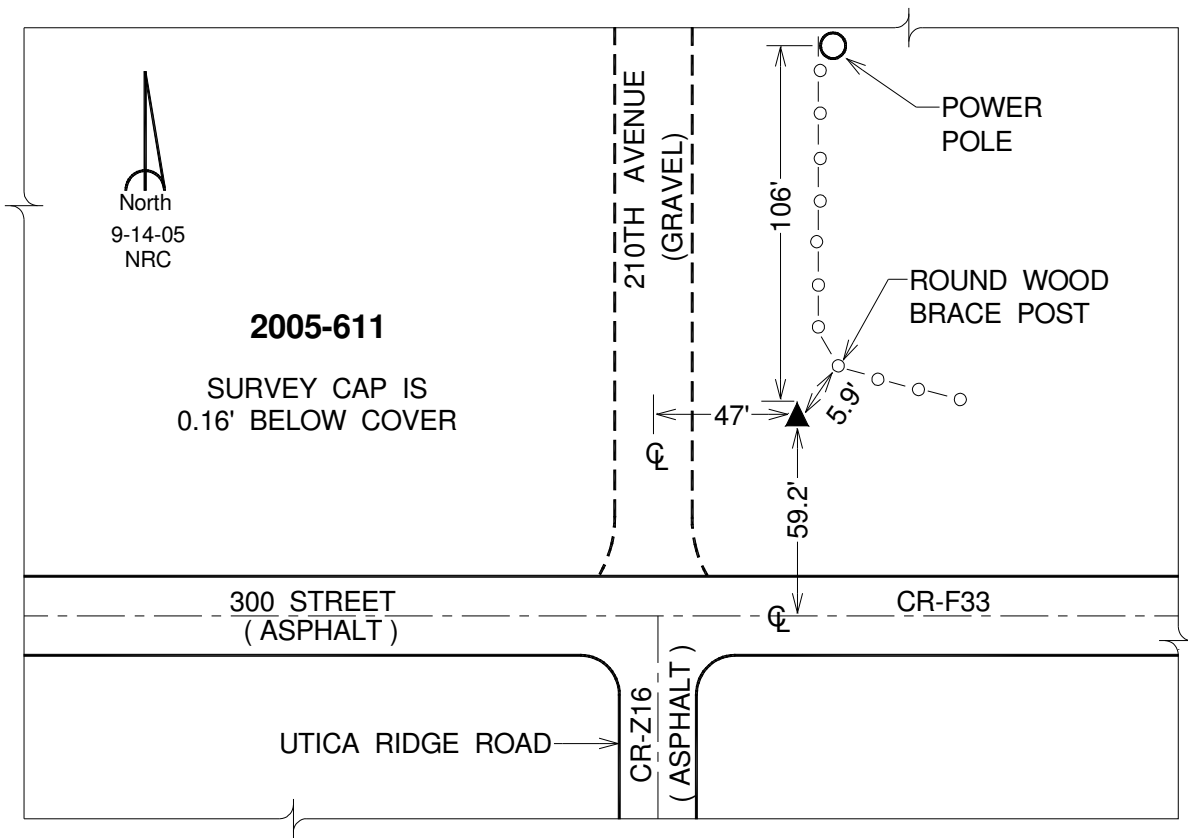
Northing: **649122.28**sft Easting: **2461574.36**sft

Orthometric Height: **613.34**sft Ellipsoid Height: **505.47**sft **Geoid12A**

Latitude: **N41°44'33.48259"** Longitude: **W90°29'25.82157"**

Mapping Angle: **1°58'56"** Combination Scale Factor: **0.999968908**

Monument Type: Berntsen Top Security Rod Monument with a 2-1/2" dia. domed survey cap and permanent magnet encased in a 5" dia. PVC pipe with a NGS style alum. access cover.



This document was prepared by DCI on 05-29-2013 for use by Clinton County, Iowa.

Clinton County, Iowa
Iowa South Zone (1402)
Horiz. Datum: **NAD83(NA2011)**
Vert. Datum: NAVD 1988
US Survey Feet
2013

Point Name: **26**

Designation: 2005-513 City of Clinton, Iowa GPS Control Pt (Set by DCI in 2005)

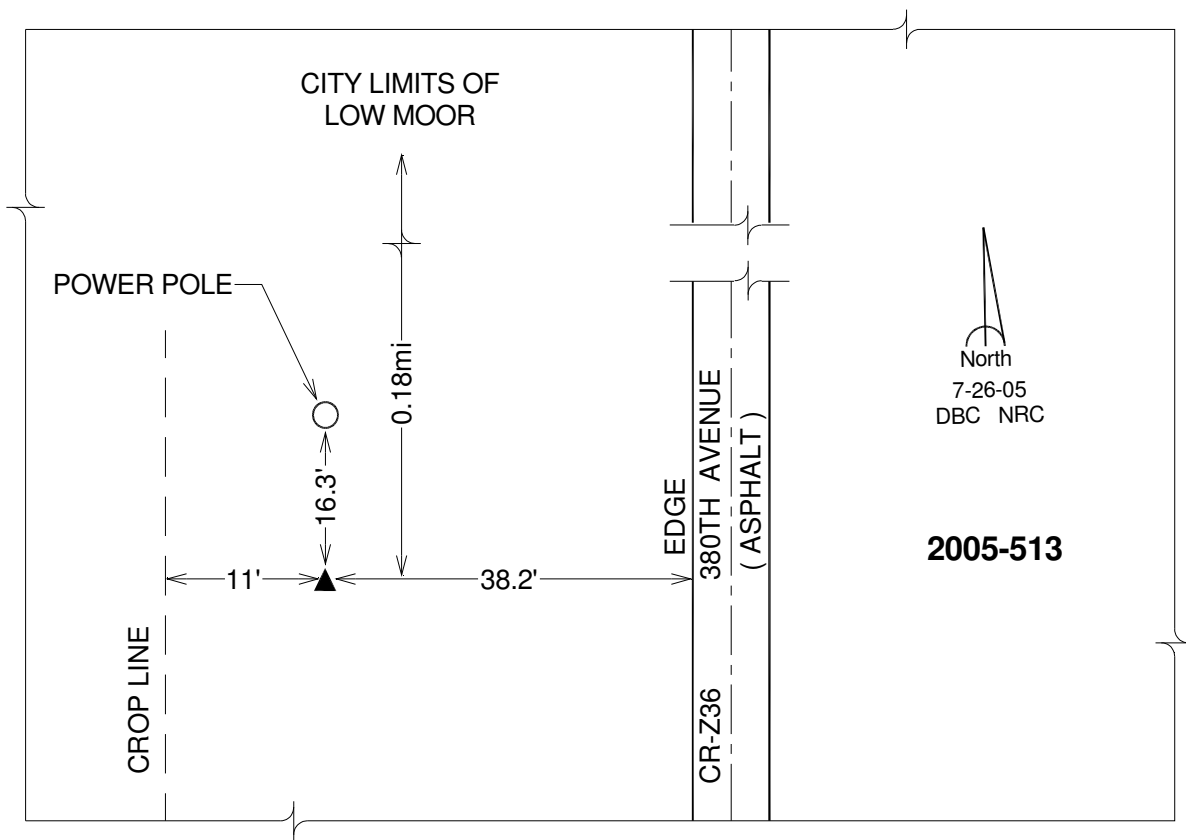
Northing: **669439.19sft** Easting: **2497826.22sft**

Orthometric Height: **650.09sft** Ellipsoid Height: **541.86sft** **Geoid12A**

Latitude: **N41°47'41.40703"** Longitude: **W90°21'18.24231"**

Mapping Angle: **2°04'18"** Combination Scale Factor: **0.999976207**

Monument Type: Berntsen Top Security Rod Monument with a 2-1/2" dia. domed survey cap and permanent magnet encased in a 5" dia. PVC pipe with a NGS style alum. access cover.



This document was prepared by DCI on 05-29-2013 for use by Clinton County, Iowa.

Clinton County, Iowa
Iowa South Zone (1402)
Horiz. Datum: **NAD83(NA2011)**
Vert. Datum: NAVD 1988
US Survey Feet
2013

Point Name: **27**

Designation: 2006-027 Clinton Co Monument (Set by Landmark Engr. in 2006)

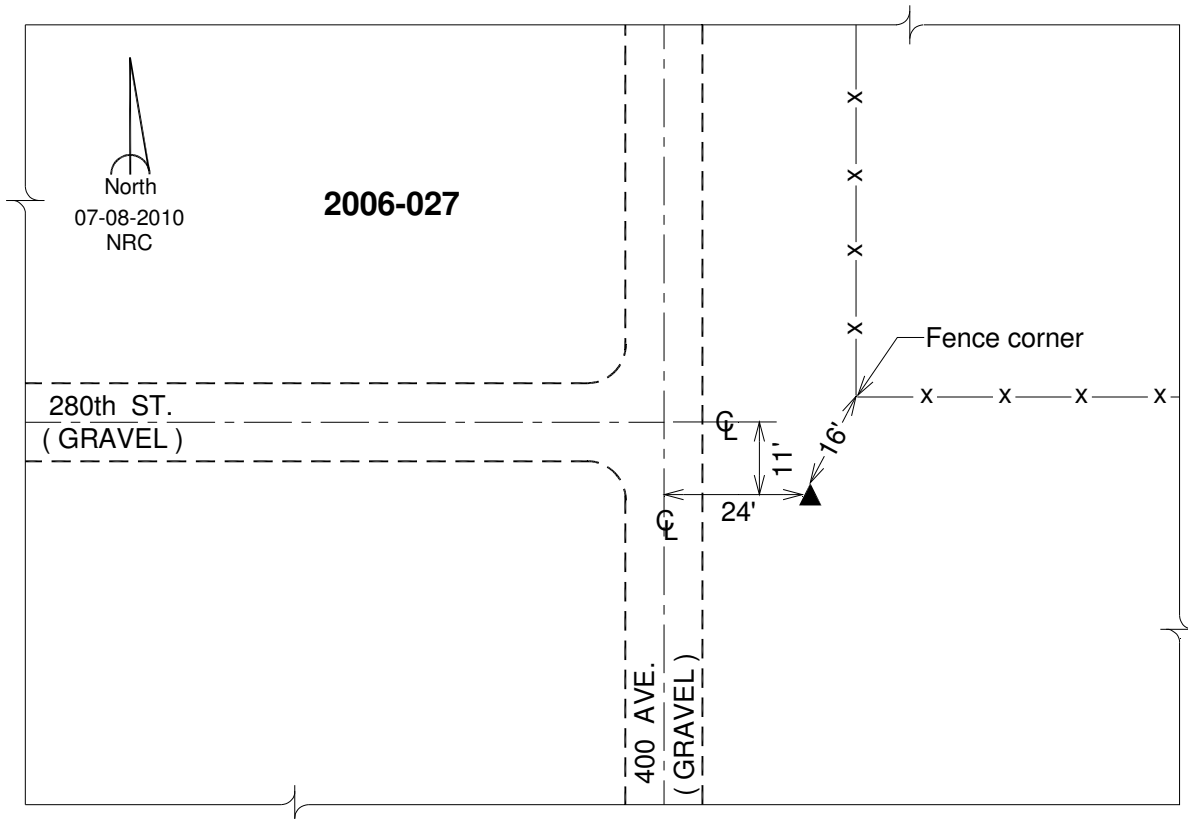
Northing: **661492.24**sft Easting: **2508795.68**sft

Orthometric Height: **641.10**sft Ellipsoid Height: **532.77**sft **Geoid12A**

Latitude: **N41°46'19.00710"** Longitude: **W90°18'57.36298"**

Mapping Angle: **2°05'50"** Combination Scale Factor: **0.999972577**

Monument Type: 3/4" x 7' aluminum rod monument encased in a PVC sleeve.



This document was prepared by DCI on 05-29-2013 for use by Clinton County, Iowa.

Clinton County, Iowa
Iowa South Zone (1402)
Horiz. Datum: **NAD83(NA2011)**
Vert. Datum: NAVD 1988
US Survey Feet
2013

Point Name: **501**

Designation: 2005-501 City of Clinton, Iowa GPS Control Pt (Set by DCI in 2005)

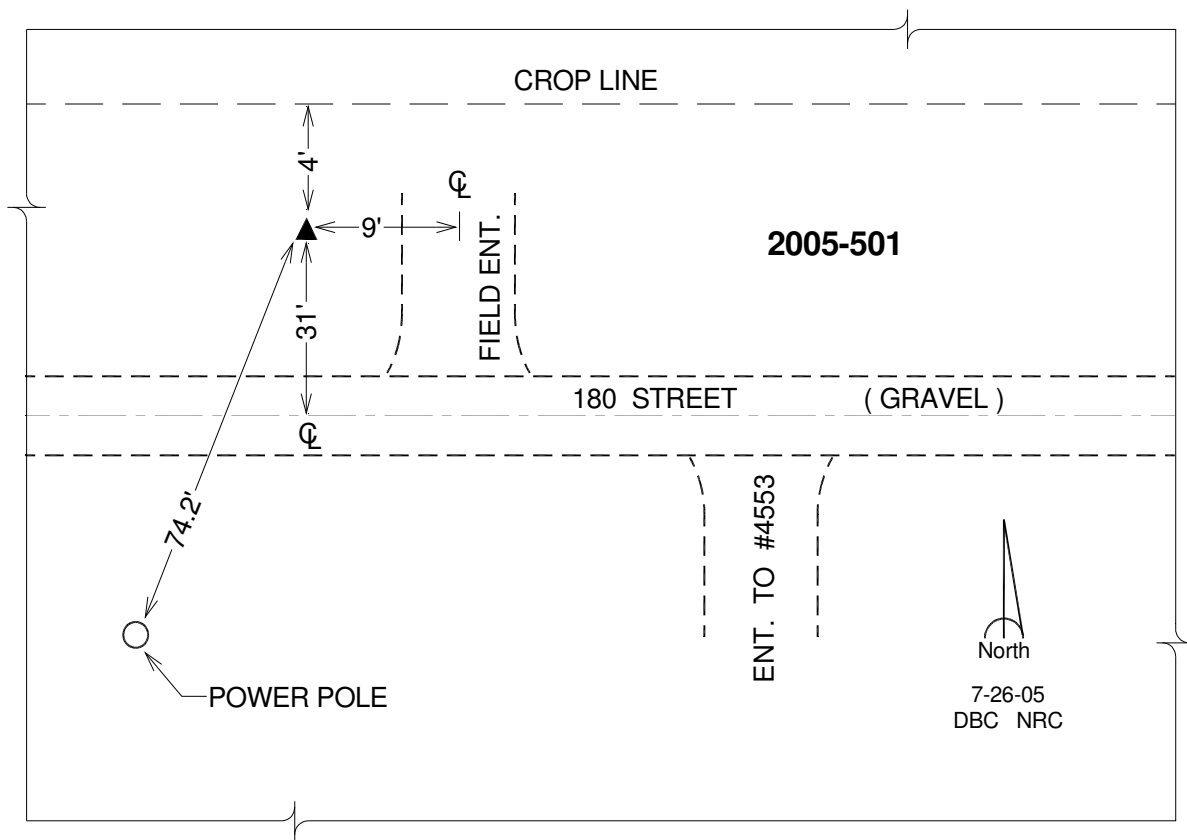
Northing: **715596.09sft** Easting: **2536255.31sft**

Orthometric Height: **788.65sft** Ellipsoid Height: **680.09sft** **Geoid12A**

Latitude: **N41°55'03.03541"** Longitude: **W90°12'28.21740"**

Mapping Angle: **2°10'07"** Combination Scale Factor: **0.999994132**

Monument Type: Berntsen Top Security Rod Monument with a 2-1/2" dia. domed survey cap and permanent magnet encased in a 5" dia. PVC pipe with a NGS style alum. access cover.



This document was prepared by DCI on 05-29-2013 for use by Clinton County, Iowa.

Clinton County, Iowa
Iowa South Zone (1402)
Horiz. Datum: **NAD83(NA2011)**
Vert. Datum: NAVD 1988
US Survey Feet
2013

Point Name: **504**

Designation: 2005-504 City of Clinton, Iowa GPS Control Pt (Set by DCI in 2005)

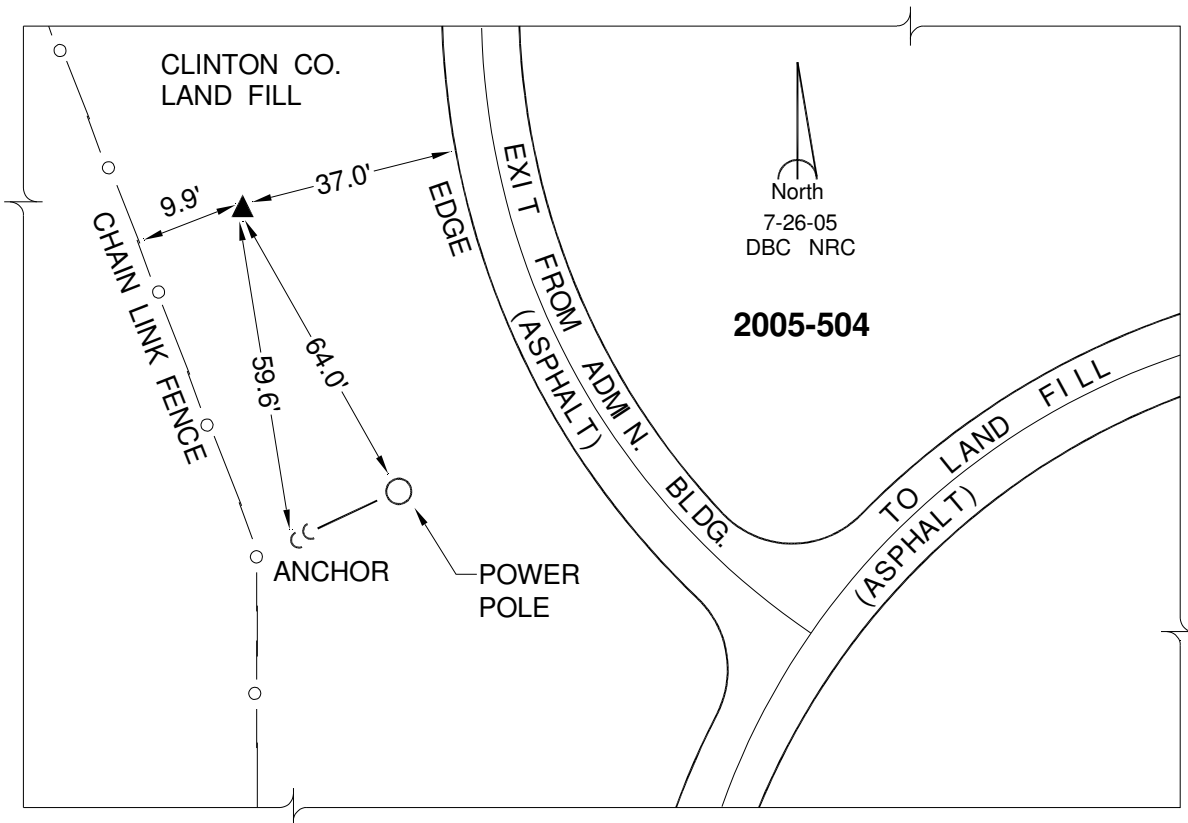
Northing: **695441.85sft** Easting: **2522758.65sft**

Orthometric Height: **708.64sft** Ellipsoid Height: **600.18sft** **Geoid12A**

Latitude: **N41°51'49.07941"** Longitude: **W90°15'36.53604"**

Mapping Angle: **2°08'03"** Combination Scale Factor: **0.999986608**

Monument Type: Berntsen Top Security Rod Monument with a 2-1/2" dia. domed survey cap and permanent magnet encased in a 5" dia. PVC pipe with a NGS style alum. access cover.



This document was prepared by DCI on 05-29-2013 for use by Clinton County, Iowa.

Clinton County, Iowa
 Iowa South Zone (1402)
 Horiz. Datum: **NAD83(NA2011)**
 Vert. Datum: NAVD 1988
 US Survey Feet
2013

Point Name: **505**

Designation: 2005-505 City of Clinton, Iowa GPS Control Pt (Set by DCI in 2005)

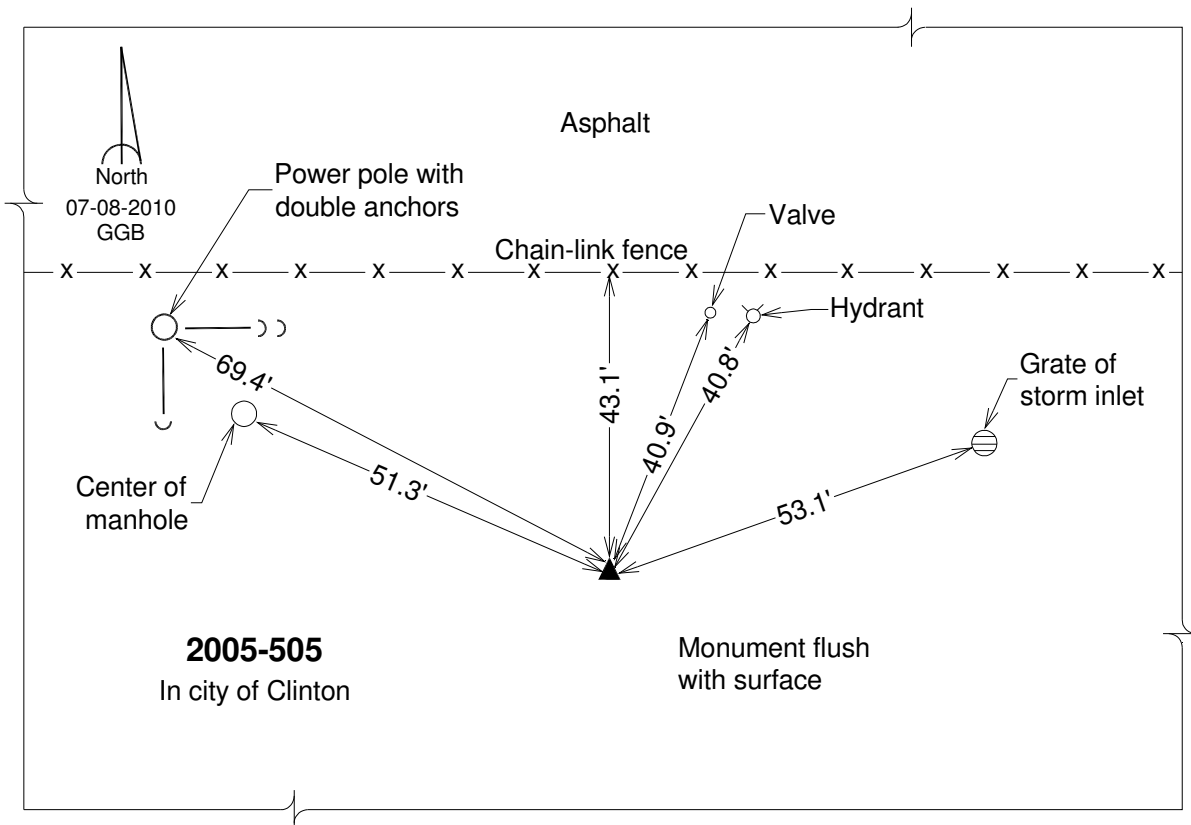
Northing: **700453.63sft** Easting: **2541738.29sft**

Orthometric Height: **623.43sft** Ellipsoid Height: **514.80sft** **Geoid12A**

Latitude: **N41°52'31.49757"** Longitude: **W90°11'23.36838"**

Mapping Angle: **2°10'49"** Combination Scale Factor: **0.999993085**

Monument Type: Berntsen Top Security Rod Monument with a 2-1/2" dia. domed survey cap and permanent magnet encased in a 5" dia. PVC pipe with a NGS style alum. access cover.



This document was prepared by DCI on 05-29-2013 for use by Clinton County, Iowa.

Clinton County, Iowa
Iowa South Zone (1402)
Horiz. Datum: **NAD83(NA2011)**
Vert. Datum: NAVD 1988
US Survey Feet
2013

Point Name: **512**

Designation: 2005-512 City of Clinton, Iowa GPS Control Pt (Set by DCI in 2005)

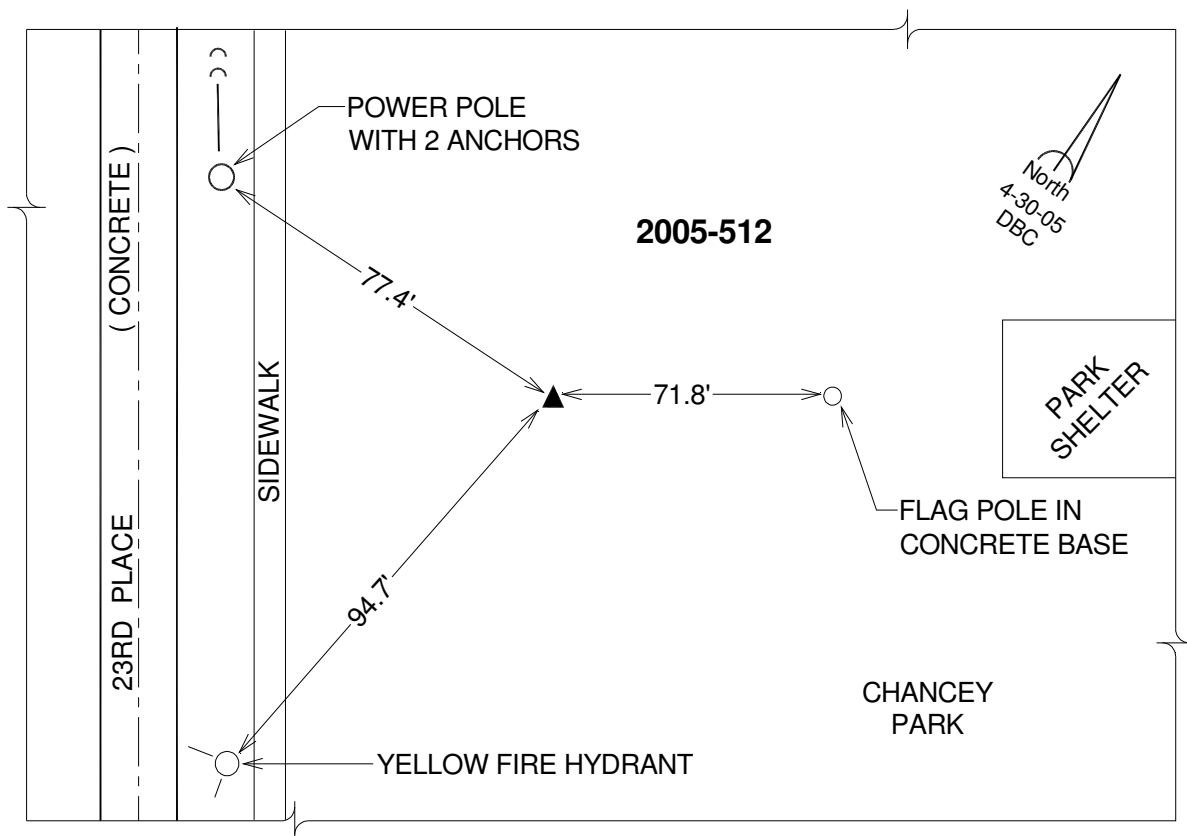
Northing: **681474.51**sft Easting: **2536389.17**sft

Orthometric Height: **634.08**sft Ellipsoid Height: **525.48**sft **Geoid12A**

Latitude: **N41°49'26.14073"** Longitude: **W90°12'43.50350"**

Mapping Angle: **2°09'57"** Combination Scale Factor: **0.999982386**

Monument Type: Berntsen Top Security Rod Monument with a 2-1/2" dia. domed survey cap and permanent magnet encased in a 5" dia. PVC pipe with a NGS style alum. access cover.



This document was prepared by DCI on 05-29-2013 for use by Clinton County, Iowa.

Clinton County, Iowa
Iowa South Zone (1402)
Horiz. Datum: **NAD83(NA2011)**
Vert. Datum: NAVD 1988
US Survey Feet
2013

Point Name: **514**

Designation: 2005-514 City of Clinton, Iowa GPS Control Pt (Set by DCI in 2005)

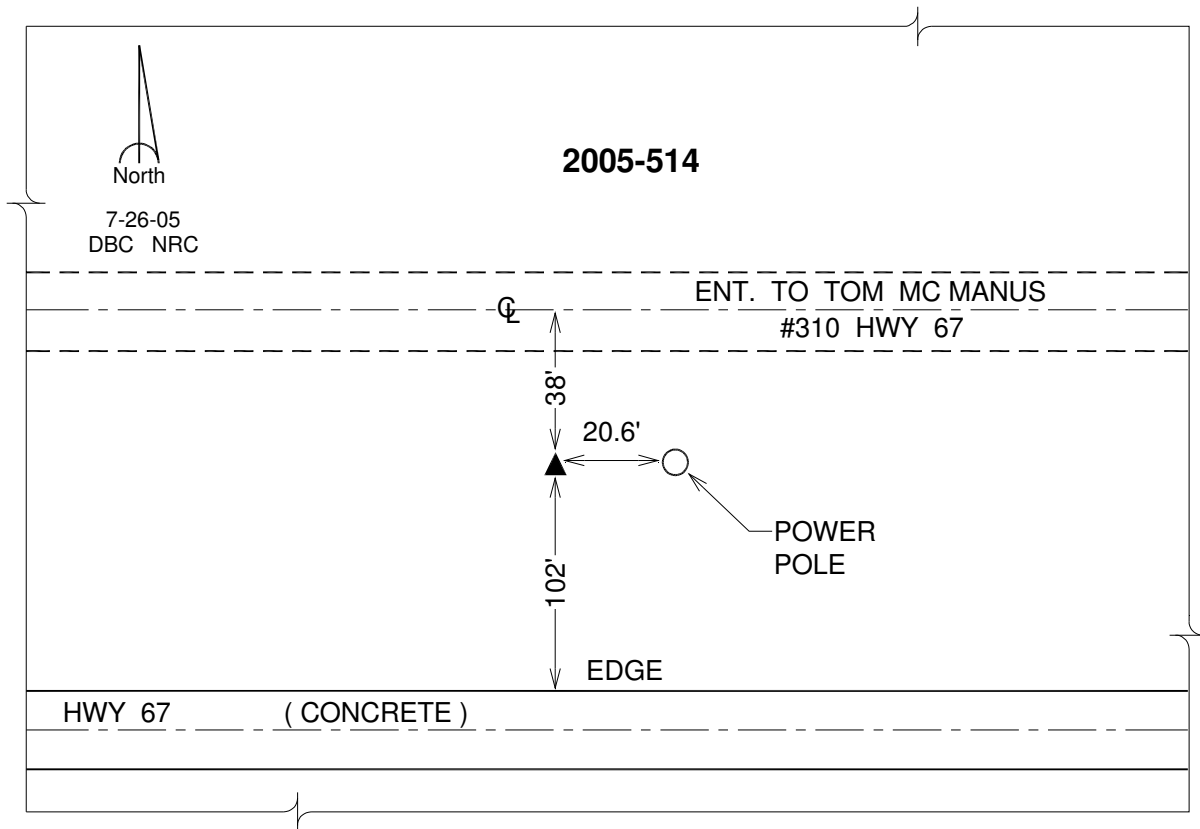
Northing: **671539.52sft** Easting: **2525842.85sft**

Orthometric Height: **596.17sft** Ellipsoid Height: **487.67sft** **Geoid12A**

Latitude: **N41°47'51.97379"** Longitude: **W90°15'07.59685"**

Mapping Angle: **2°08'22"** Combination Scale Factor: **0.999979326**

Monument Type: Berntsen Top Security Rod Monument with a 2-1/2" dia. domed survey cap and permanent magnet encased in a 5" dia. PVC pipe with a NGS style alum. access cover.



This document was prepared by DCI on 05-29-2013 for use by Clinton County, Iowa.

Clinton County, Iowa
 Iowa South Zone (1402)
 Horiz. Datum: **NAD83(NA2011)**
 Vert. Datum: NAVD 1988
 US Survey Feet
2013

Point Name: **518**

Designation: CBN horizontal control station "RISL A" PID: AE9310

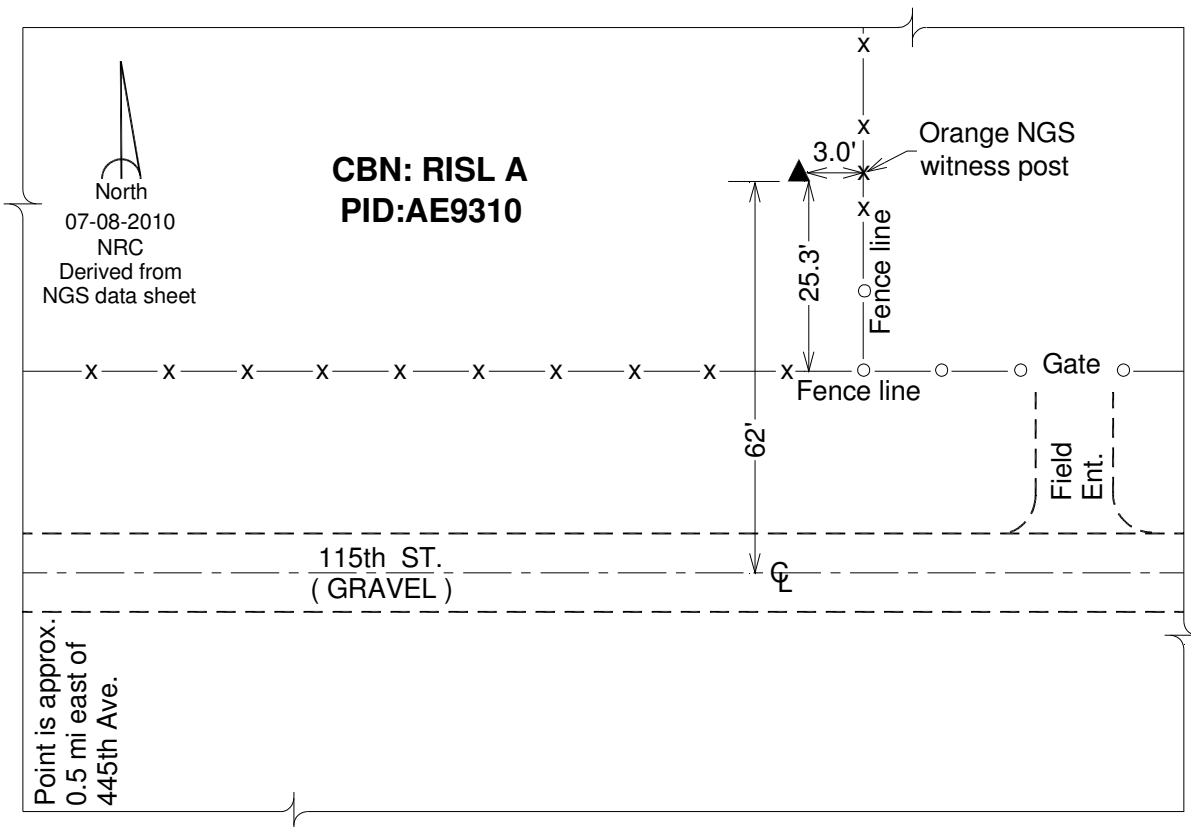
Northing: **749801.31sft** Easting: **2530404.05sft**

Orthometric Height: **797.45sft** Ellipsoid Height: **688.95sft** **Geoid12A**

Latitude: **N42°00'42.87576"** Longitude: **W90°13'28.52291"**

Mapping Angle: **2°09'27"** Combination Scale Factor: **1.000015724**

Monument Type: Datum point on the top of a stainless steel rod in greased sleeve, surrounded by a 5" dia. PVC pipe with a NGS logo cover stamped "RISL A 1997".



This document was prepared by DCI on 05-29-2013 for use by Clinton County, Iowa.

Clinton County, Iowa
Iowa South Zone (1402)
Horiz. Datum: **NAD83(NA2011)**
Vert. Datum: NAVD 1988
US Survey Feet
2013

Point Name: **549**

Designation: WS-17 Whiteside Co, Illinois GPS Control Pt (Set by ASI in 1991)

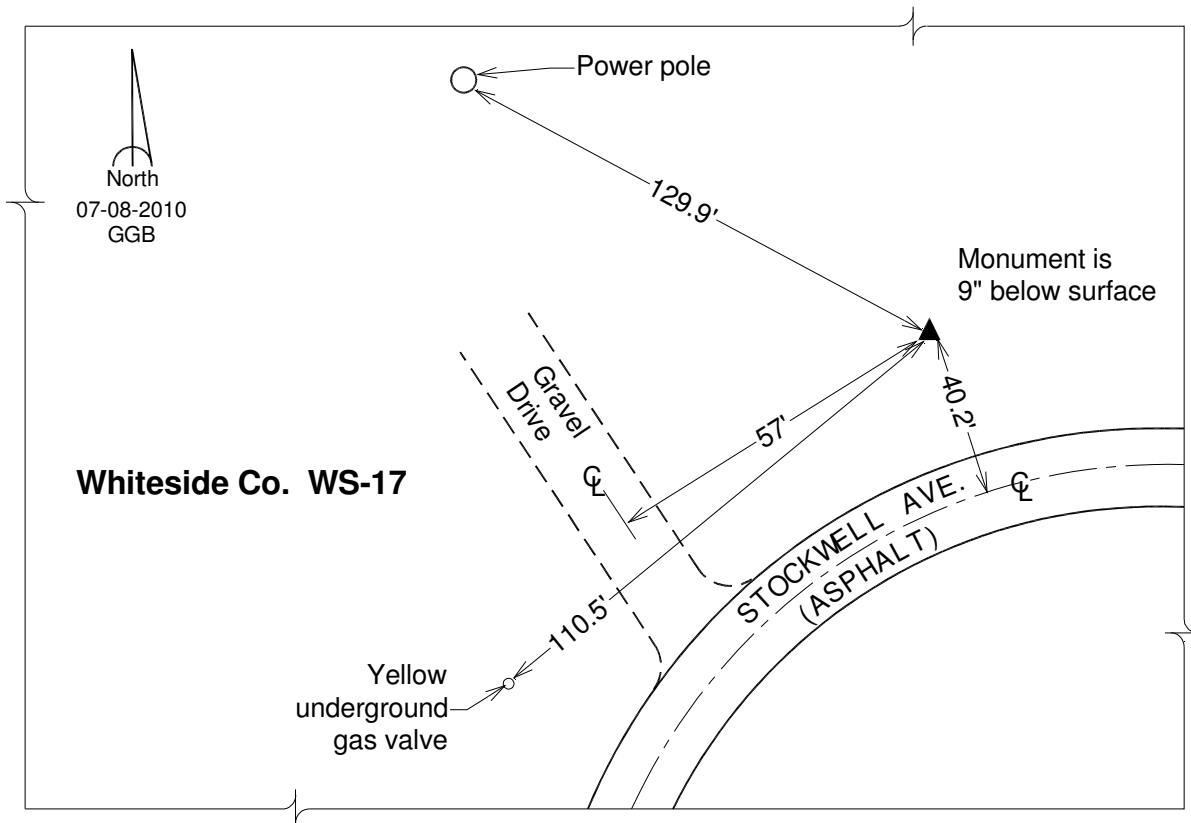
Northing: **707635.91sft** Easting: **2536361.59sft**

Orthometric Height: **705.50sft** Ellipsoid Height: **596.93sft** **Geoid12A**

Latitude: **N41°53'44.41474"** Longitude: **W90°12'30.79571"**

Mapping Angle: **2°10'05"** Combination Scale Factor: **0.999993398**

Monument Type: Mech. Driven aluminum rod with 3-1/4" dia. aluminum survey cap with a permanent magnet encased in a 6" dia. PVC pipe with a aluminum access cover.



This document was prepared by DCI on 05-29-2013 for use by Clinton County, Iowa.

Clinton County, Iowa
 Iowa South Zone (1402)
 Horiz. Datum: **NAD83(NA2011)**
 Vert. Datum: NAVD 1988
 US Survey Feet
2013

Point Name: **602**

Designation: 2005-602 Scott Co GPS Control Pt (Set by DCI in 2005)

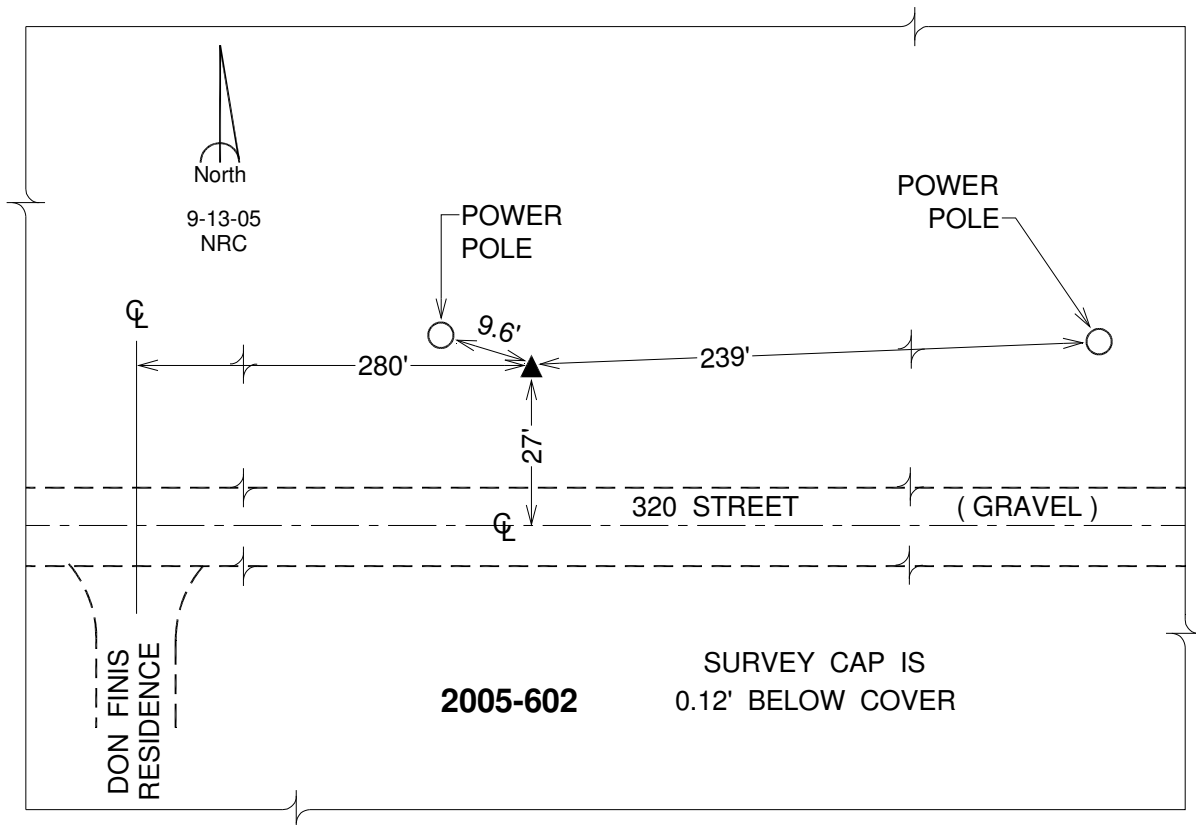
Northing: **656550.91sft** Easting: **2365341.00sft**

Orthometric Height: **706.44sft** Ellipsoid Height: **599.18sft** **Geoid12A**

Latitude: **N41°46'17.80072"** Longitude: **W90°50'31.66766"**

Mapping Angle: **1°45'03"** Combination Scale Factor: **0.999969349**

Monument Type: Berntsen Top Security Rod Monument with a 2-1/2" dia. domed survey cap and permanent magnet encased in a 5" dia. PVC pipe with a NGS style alum. access cover.



This document was prepared by DCI on 05-29-2013 for use by Clinton County, Iowa.

Clinton County, Iowa
Iowa South Zone (1402)
Horiz. Datum: **NAD83(NA2011)**
Vert. Datum: NAVD 1988
US Survey Feet
2013

Point Name: **609**

Designation: 2005-609 Scott Co GPS Control Pt (Set by DCI in 2005)

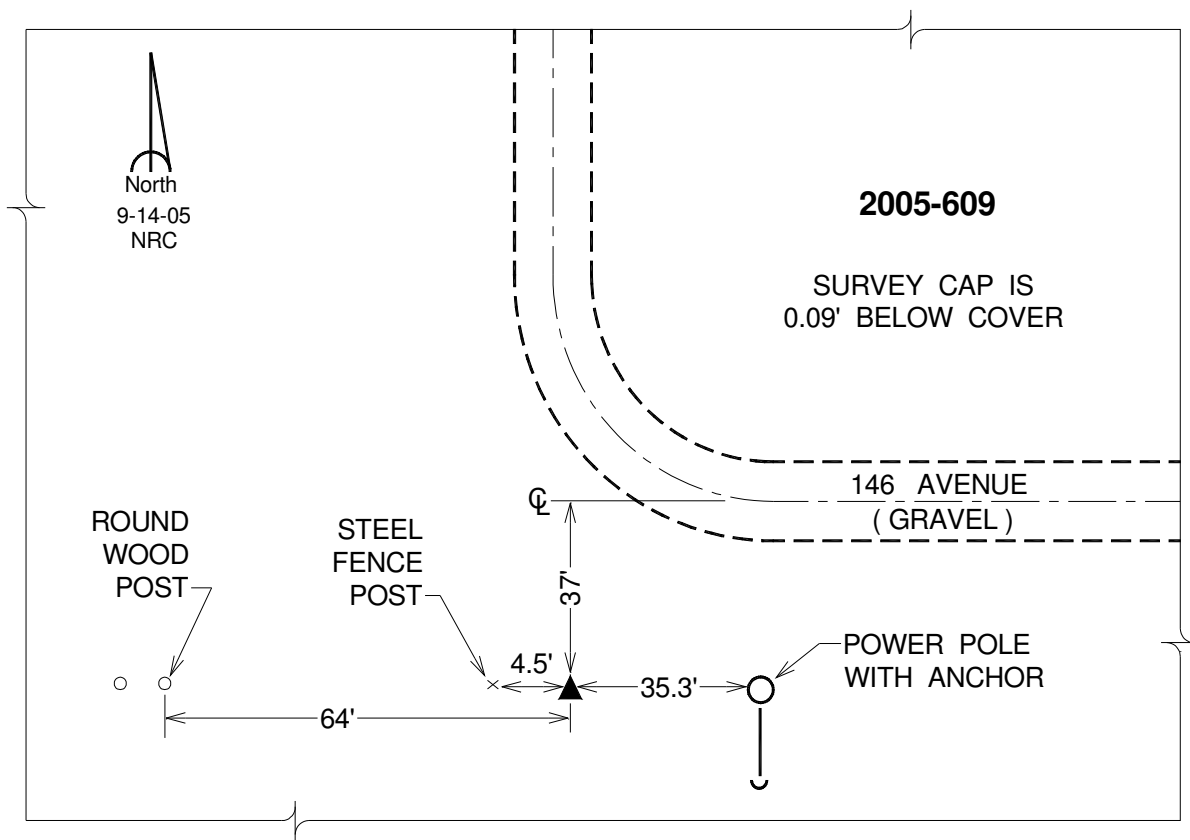
Northing: **649119.56**sft Easting: **2427116.01**sft

Orthometric Height: **681.77**sft Ellipsoid Height: **574.14**sft **Geoid12A**

Latitude: **N41°44'44.98501"** Longitude: **W90°37'00.11854"**

Mapping Angle: **1°53'57"** Combination Scale Factor: **0.999966161**

Monument Type: Berntsen Top Security Rod Monument with a 2-1/2" dia. domed survey cap and permanent magnet encased in a 5" dia. PVC pipe with a NGS style alum. access cover.



This document was prepared by DCI on 05-29-2013 for use by Clinton County, Iowa.

Clinton County, Iowa
Iowa South Zone (1402)
Horiz. Datum: **NAD83(NA2011)**
Vert. Datum: NAVD 1988
US Survey Feet
2013

Point Name: **610**

Designation: 2005-610 Scott Co GPS Control Pt (Set by DCI in 2005)

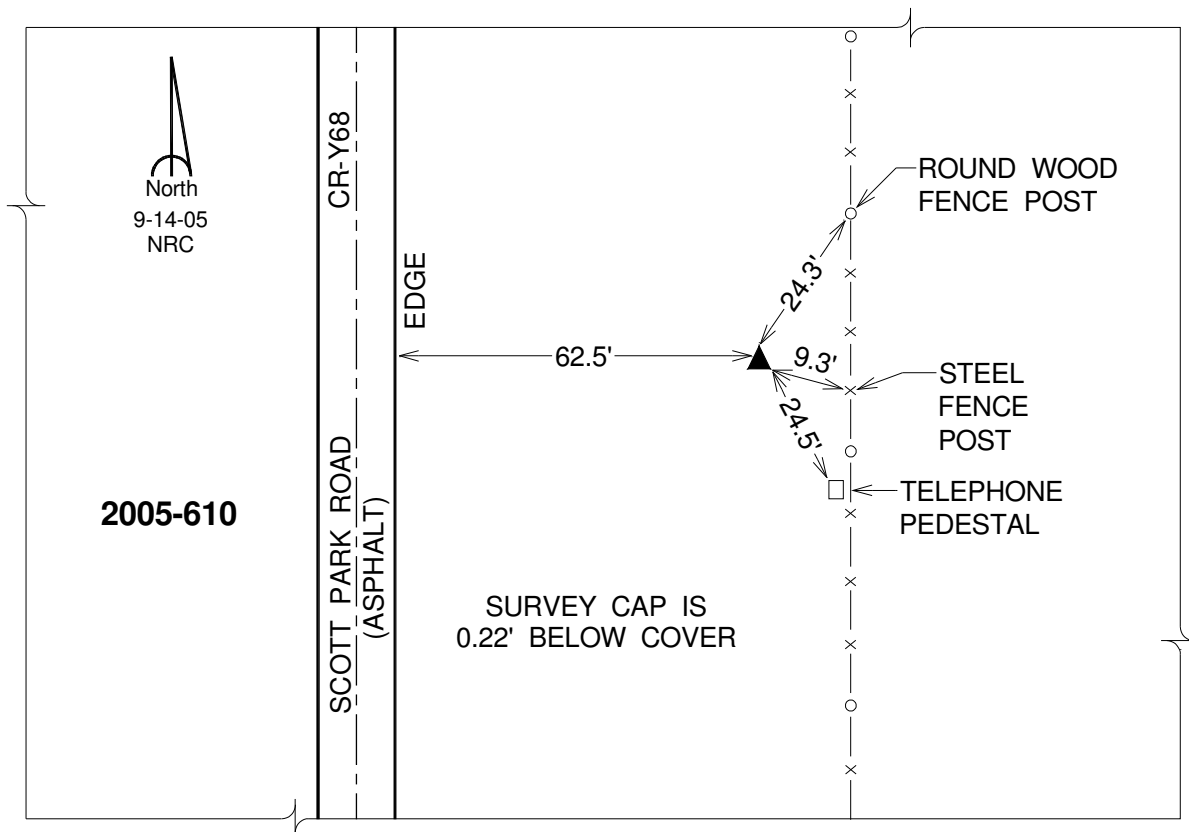
Northing: **648973.85**sft Easting: **2448749.48**sft

Orthometric Height: **673.75**sft Ellipsoid Height: **565.98**sft **Geoid12A**

Latitude: **N41°44'36.36575"** Longitude: **W90°32'14.96508"**

Mapping Angle: **1°57'05"** Combination Scale Factor: **0.999966153**

Monument Type: Berntsen Top Security Rod Monument with a 2-1/2" dia. domed survey cap and permanent magnet encased in a 5" dia. PVC pipe with a NGS style alum. access cover.



This document was prepared by DCI on 05-29-2013 for use by Clinton County, Iowa.

Clinton County, Iowa
 Iowa South Zone (1402)
 Horiz. Datum: **NAD83(NA2011)**
 Vert. Datum: NAVD 1988
 US Survey Feet
2013

Point Name: **612**

Designation: 2005-612 Scott Co GPS Control Pt (Set by DCI in 2005)

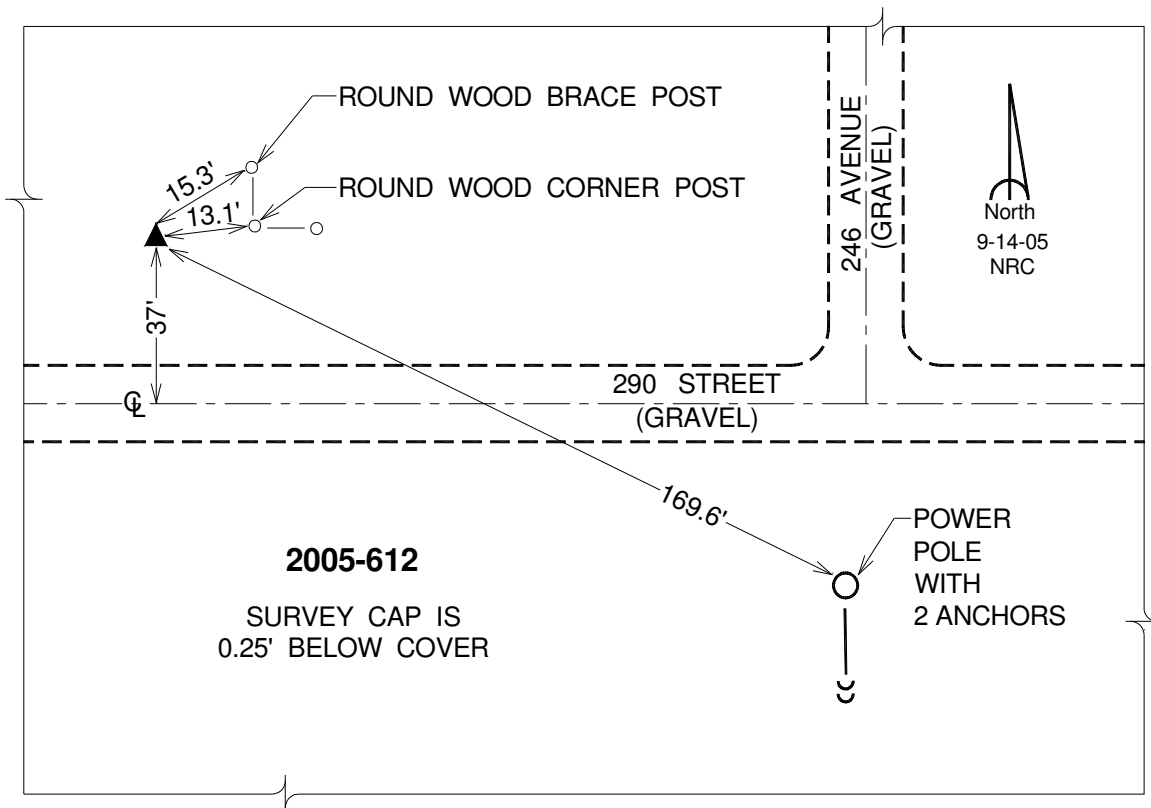
Northing: **644598.11**sft Easting: **2480567.84**sft

Orthometric Height: **609.09**sft Ellipsoid Height: **501.05**sft **Geoid12A**

Latitude: **N41°43'42.24840"** Longitude: **W90°25'17.54415"**

Mapping Angle: **2°01'40"** Combination Scale Factor: **0.999966800**

Monument Type: Berntsen Top Security Rod Monument with a 2-1/2" dia. domed survey cap and permanent magnet encased in a 5" dia. PVC pipe with a NGS style alum. access cover.



This document was prepared by DCI on 05-29-2013 for use by Clinton County, Iowa.

Clinton County, Iowa
Iowa South Zone (1402)
Horiz. Datum: **NAD83(NA2011)**
Vert. Datum: NAVD 1988
US Survey Feet
2013

Point Name: **613**

Designation: 2005-613 Scott Co GPS Control Pt (Set by DCI in 2005)

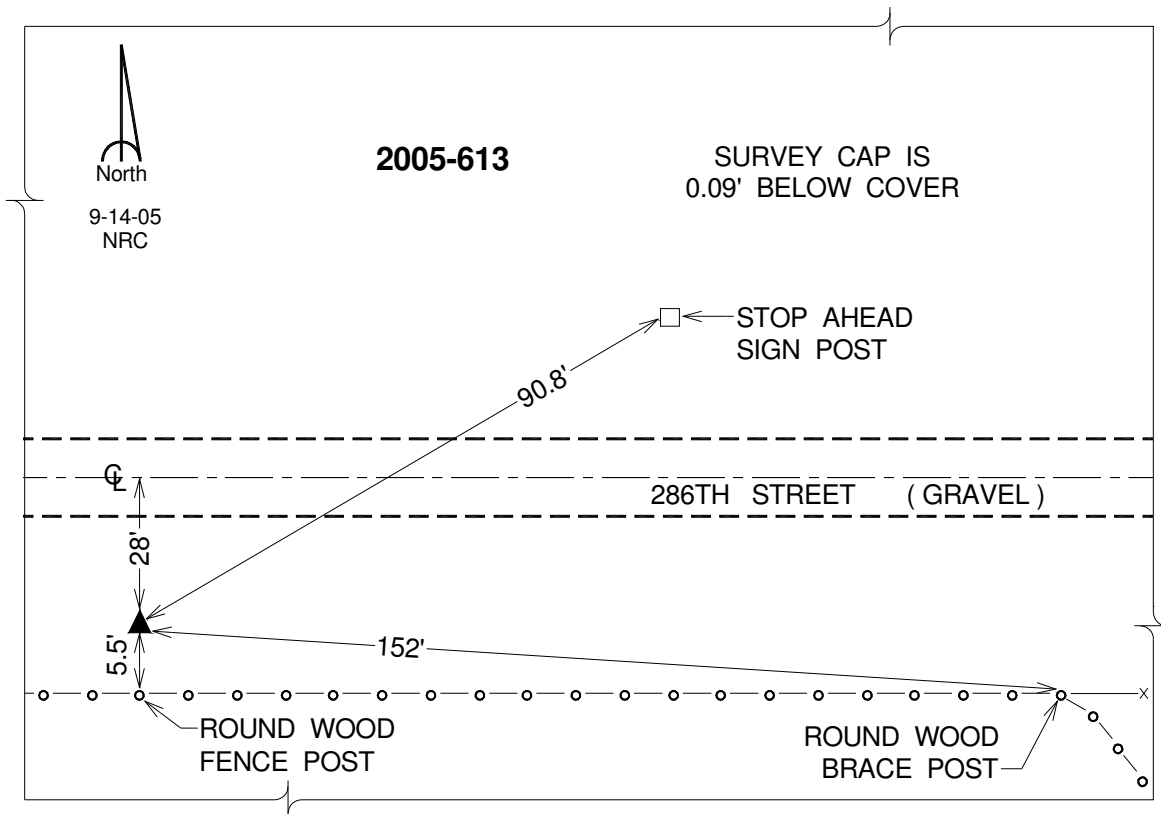
Northing: **643214.79sft** Easting: **2498277.17sft**

Orthometric Height: **592.45sft** Ellipsoid Height: **484.24sft** **Geoid12A**

Latitude: **N41°43'22.33492"** Longitude: **W90°21'24.80026"**

Mapping Angle: **2°04'13"** Combination Scale Factor: **0.999966718**

Monument Type: Berntsen Top Security Rod Monument with a 2-1/2" dia. domed survey cap and permanent magnet encased in a 5" dia. PVC pipe with a NGS style alum. access cover.



This document was prepared by DCI on 05-29-2013 for use by Clinton County, Iowa.

Clinton County, Iowa
Iowa South Zone (1402)
Horiz. Datum: **NAD83(NA2011)**
Vert. Datum: NAVD 1988
US Survey Feet
2013

Point Name: **643**

Designation: 2005-643 Scott Co GPS Control Pt (Set by DCI in 2005)

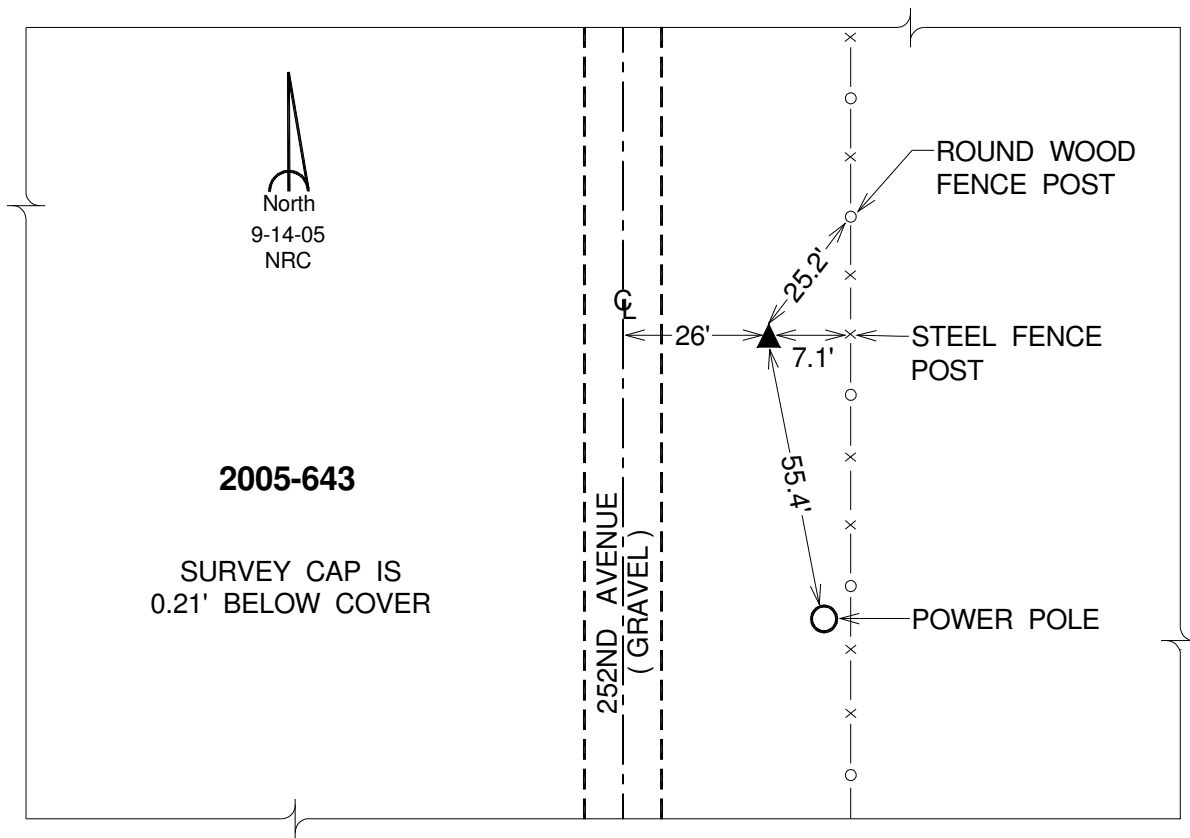
Northing: **664846.42sft** Easting: **2430549.63sft**

Orthometric Height: **661.43sft** Ellipsoid Height: **553.83sft** **Geoid12A**

Latitude: **N41°47'19.14296"** Longitude: **W90°36'07.93772"**

Mapping Angle: **1°54'32"** Combination Scale Factor: **0.999974522**

Monument Type: Berntsen Top Security Rod Monument with a 2-1/2" dia. domed survey cap and permanent magnet encased in a 5" dia. PVC pipe with a NGS style alum. access cover.



This document was prepared by DCI on 05-29-2013 for use by Clinton County, Iowa.

Clinton County, Iowa
Iowa South Zone (1402)
Horiz. Datum: **NAD83(NA2011)**
Vert. Datum: NAVD 1988
US Survey Feet
2013

Point Name: **5002**

Designation: FBN horizontal control station "E 79" PID: NJ0232

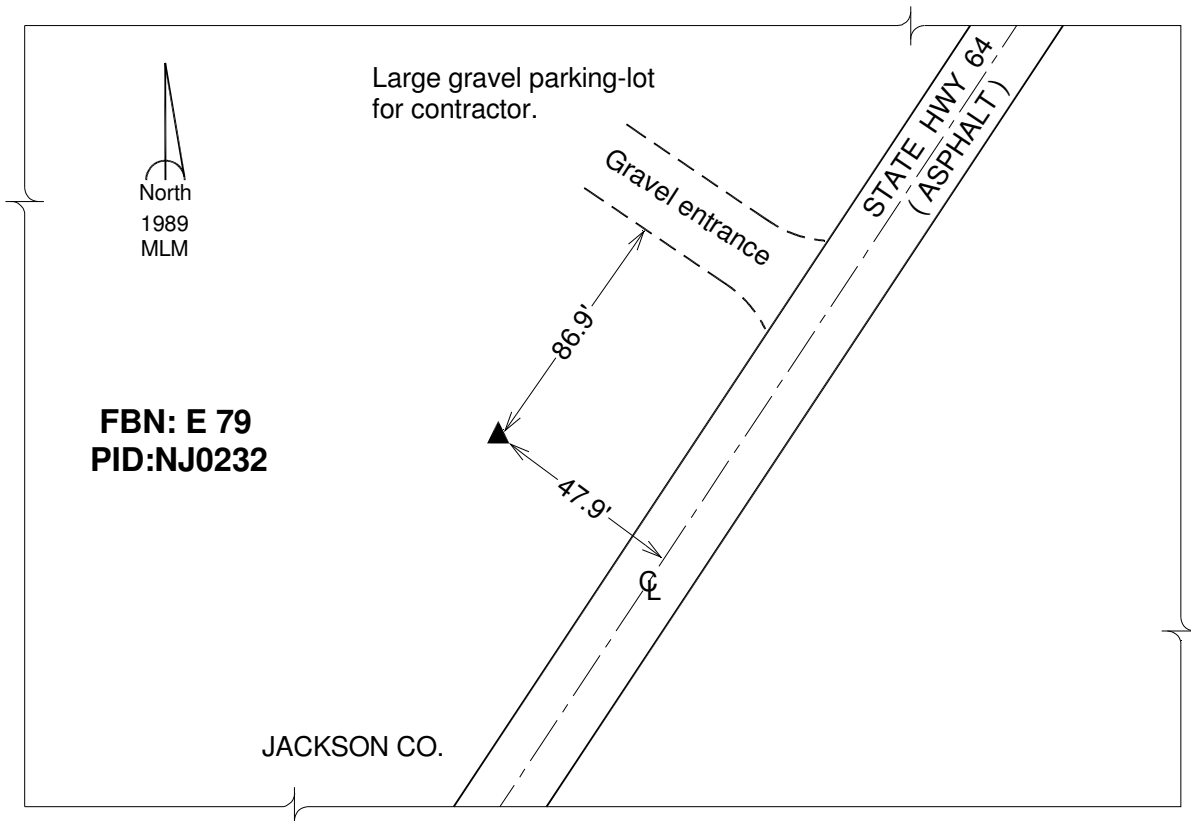
Northing: **761048.77sft** Easting: **2445796.00sft**

Orthometric Height: **885.11sft** Ellipsoid Height: **777.57sft** **Geoid12A**

Latitude: **N42°03'03.88820"** Longitude: **W90°32'03.50577"**

Mapping Angle: **1°57'13"** Combination Scale Factor: **1.000021434**

Monument Type: A standard bench mark disk set in the top of a concrete monument.



This document was prepared by DCI on 05-29-2013 for use by Clinton County, Iowa.

Clinton County, Iowa
 Iowa South Zone (1402)
 Horiz. Datum: **NAD83(NA2011)**
 Vert. Datum: NAVD 1988
 US Survey Feet
2013

Point Name: **5054**

Designation: 2007-054 Cedar Co GPS Control Pt (Set by DCI in 2007)

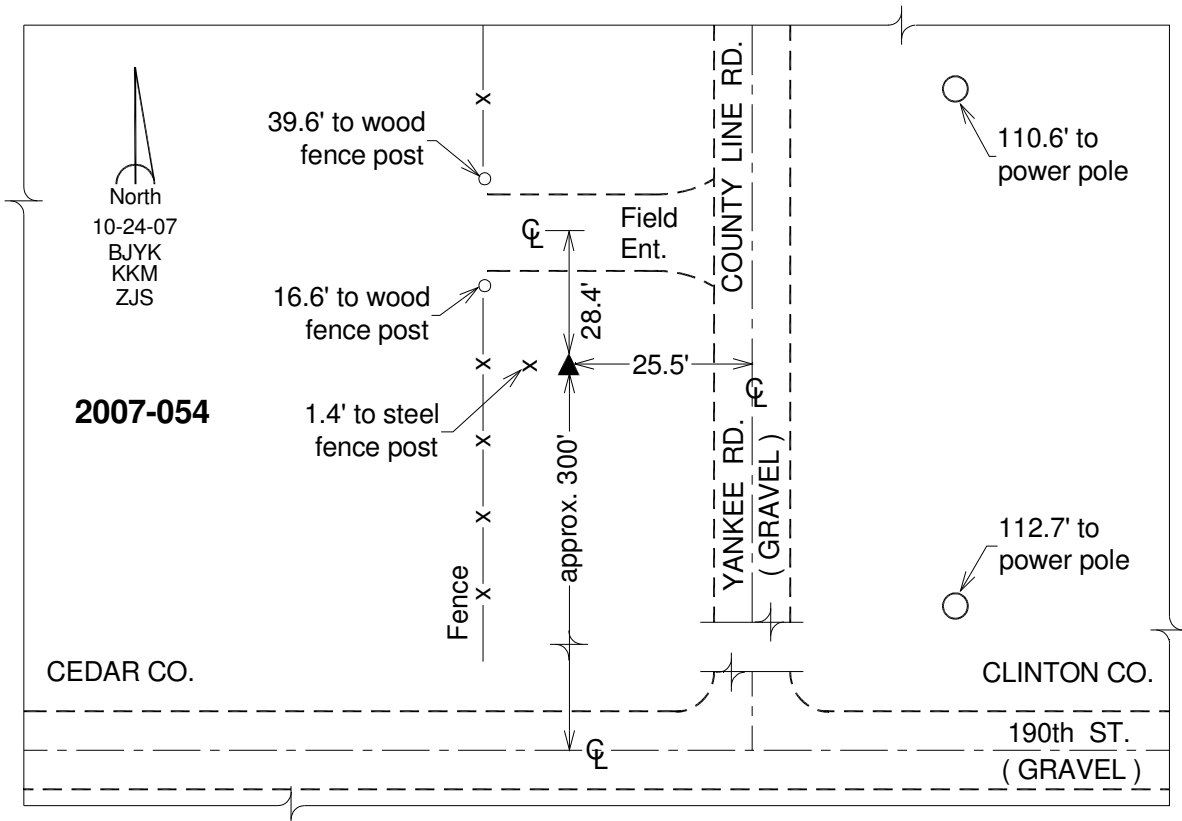
Northing: **672251.38**sft Easting: **2349464.17**sft

Orthometric Height: **790.37**sft Ellipsoid Height: **683.22**sft **Geoid12A**

Latitude: **N41°48'57.57977"** Longitude: **W90°53'54.90499"**

Mapping Angle: **1°42'49"** Combination Scale Factor: **0.999973362**

Monument Type: Berntsen 3/4" Top Security Rod Monument with a 2-1/2" dia. domed survey cap and permanent magnet encased in a white PVC pipe with a NGS style alum. access cover.



This document was prepared by DCI on 05-29-2013 for use by Clinton County, Iowa.

Clinton County, Iowa
Iowa South Zone (1402)
Horiz. Datum: **NAD83(NA2011)**
Vert. Datum: NAVD 1988
US Survey Feet
2013

Point Name: **5055**

Designation: 2007-055 Cedar Co GPS Control Pt (Set by DCI in 2007)

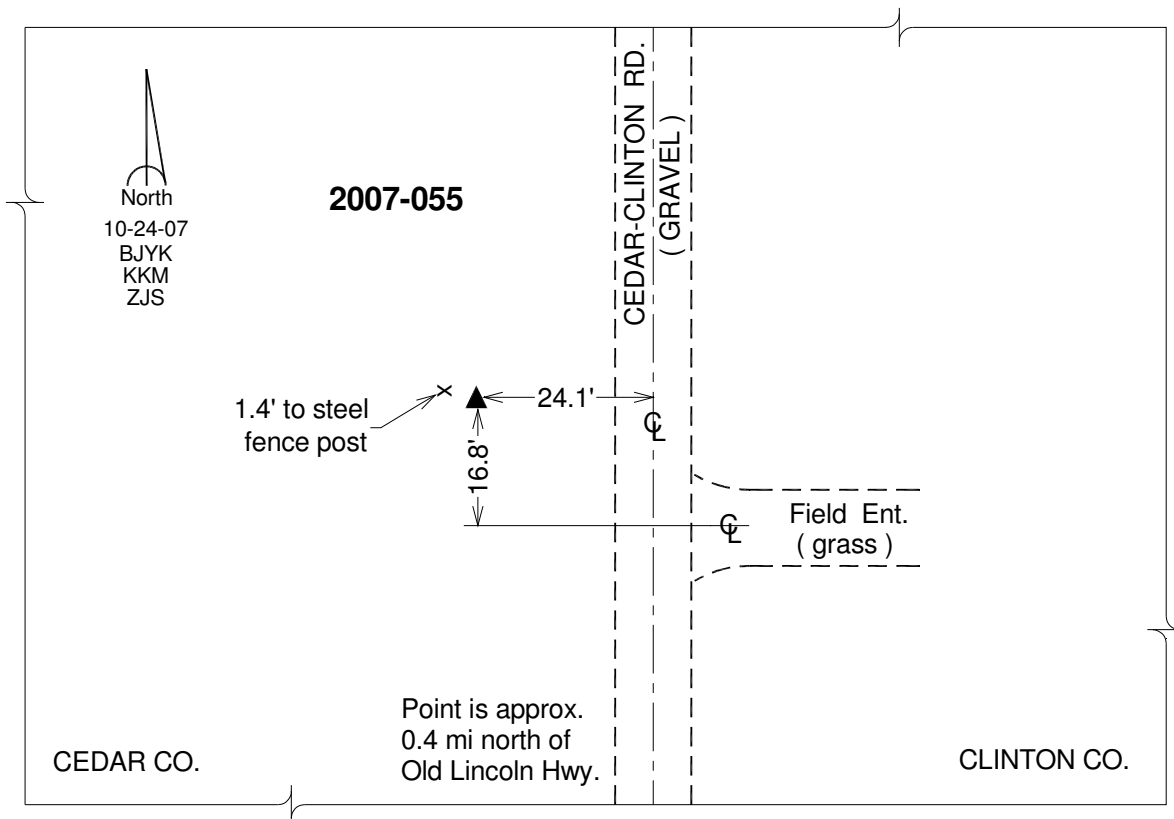
Northing: **687380.50**sft Easting: **2349069.16**sft

Orthometric Height: **727.96**sft Ellipsoid Height: **620.85**sft **Geoid12A**

Latitude: **N41°51'27.09148"** Longitude: **W90°53'54.14423"**

Mapping Angle: **1°42'49"** Combination Scale Factor: **0.999984392**

Monument Type: Berntsen 3/4" Top Security Rod Monument with a 2-1/2" dia. domed survey cap and permanent magnet encased in a white PVC pipe with a NGS style alum. access cover.



This document was prepared by DCI on 05-29-2013 for use by Clinton County, Iowa.

Clinton County, Iowa
 Iowa South Zone (1402)
 Horiz. Datum: **NAD83(NA2011)**
 Vert. Datum: NAVD 1988
 US Survey Feet
2013

Point Name: **5056**

Designation: 2007-056 Cedar Co GPS Control Pt (Set by DCI in 2007)

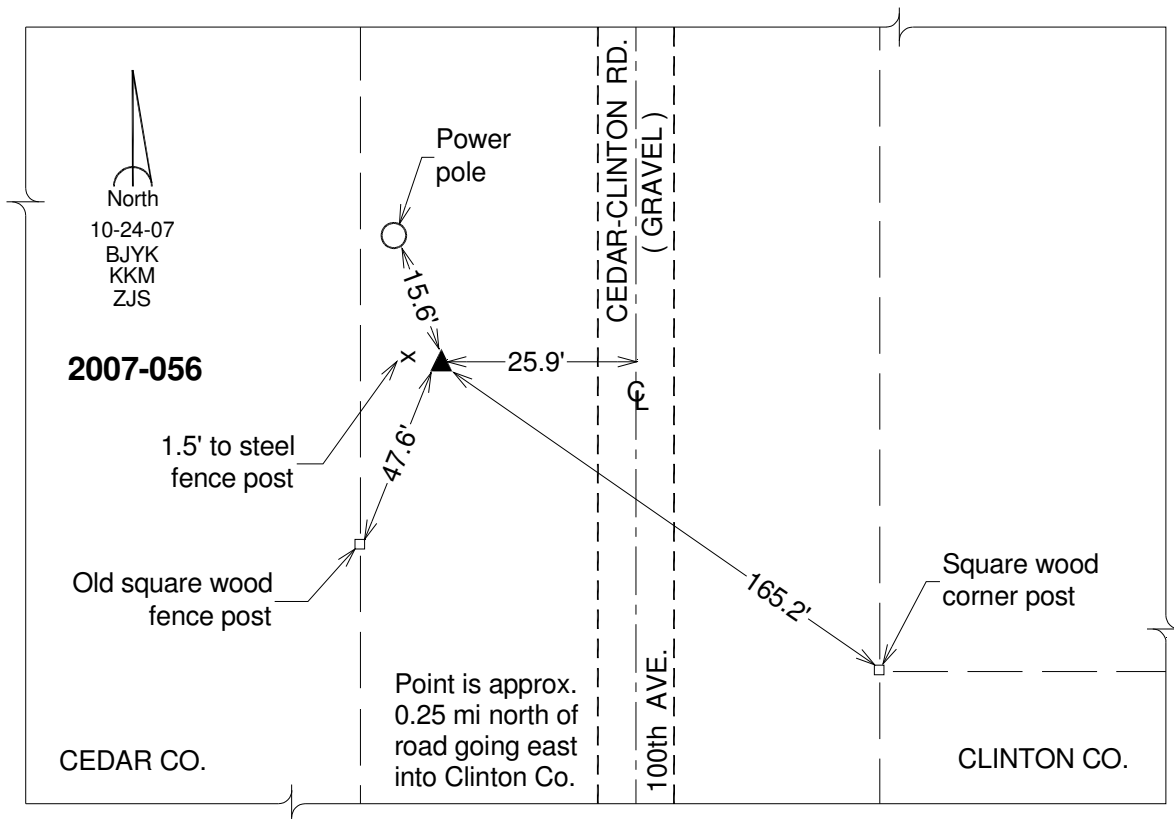
Northing: **702598.86**sft Easting: **2348569.88**sft

Orthometric Height: **713.69**sft Ellipsoid Height: **606.62**sft **Geoid12A**

Latitude: **N41°53'57.51288"** Longitude: **W90°53'54.72542"**

Mapping Angle: **1°42'49"** Combination Scale Factor: **0.999993708**

Monument Type: Berntsen 3/4" Top Security Rod Monument with a 2-1/2" dia. domed survey cap and permanent magnet encased in a white PVC pipe with a NGS style alum. access cover.



This document was prepared by DCI on 05-29-2013 for use by Clinton County, Iowa.

Clinton County, Iowa
Iowa South Zone (1402)
Horiz. Datum: **NAD83(NA2011)**
Vert. Datum: NAVD 1988
US Survey Feet
2013

Point Name: **5069**

Designation: JONES CO. GPS CONTROL PT. 2004-069 (Set by DCI in 2004)

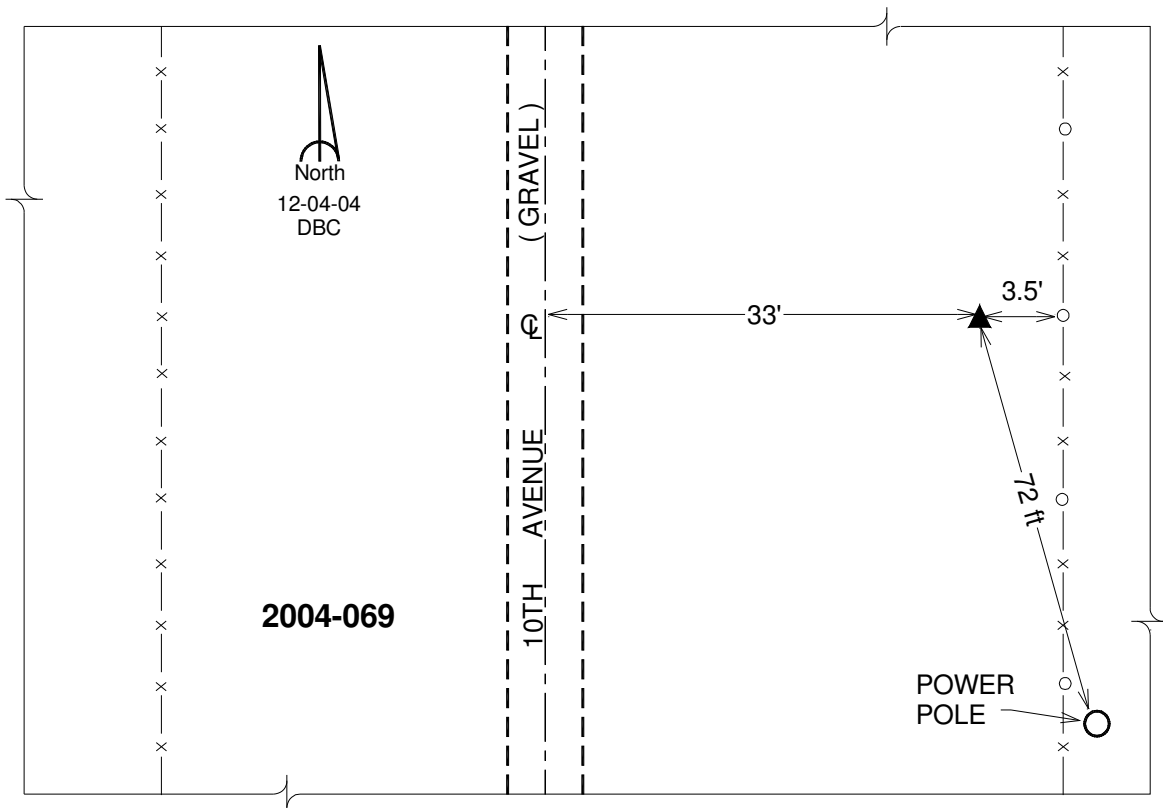
Northing: **737281.86**sft Easting: **2347584.57**sft

Orthometric Height: **879.73**sft Ellipsoid Height: **772.82**sft **Geoid12A**

Latitude: **N41°59'40.27245"** Longitude: **W90°53'54.03323"**

Mapping Angle: **1°42'49"** Combination Scale Factor: **1.000007461**

Monument Type: Berntsen Top Security Rod Monument with a 2-1/2" dia. domed cap and a permanent magnet encased in a 5" dia. PVC pipe with a NGS style aluminum access cover.



This document was prepared by DCI on 05-29-2013 for use by Clinton County, Iowa.

Clinton County, Iowa
 Iowa South Zone (1402)
 Horiz. Datum: **NAD83(NA2011)**
 Vert. Datum: NAVD 1988
 US Survey Feet
2013

Point Name: **5070**

Designation: JONES CO. GPS CONTROL PT. 2004-070 (Set DCI in 2004)

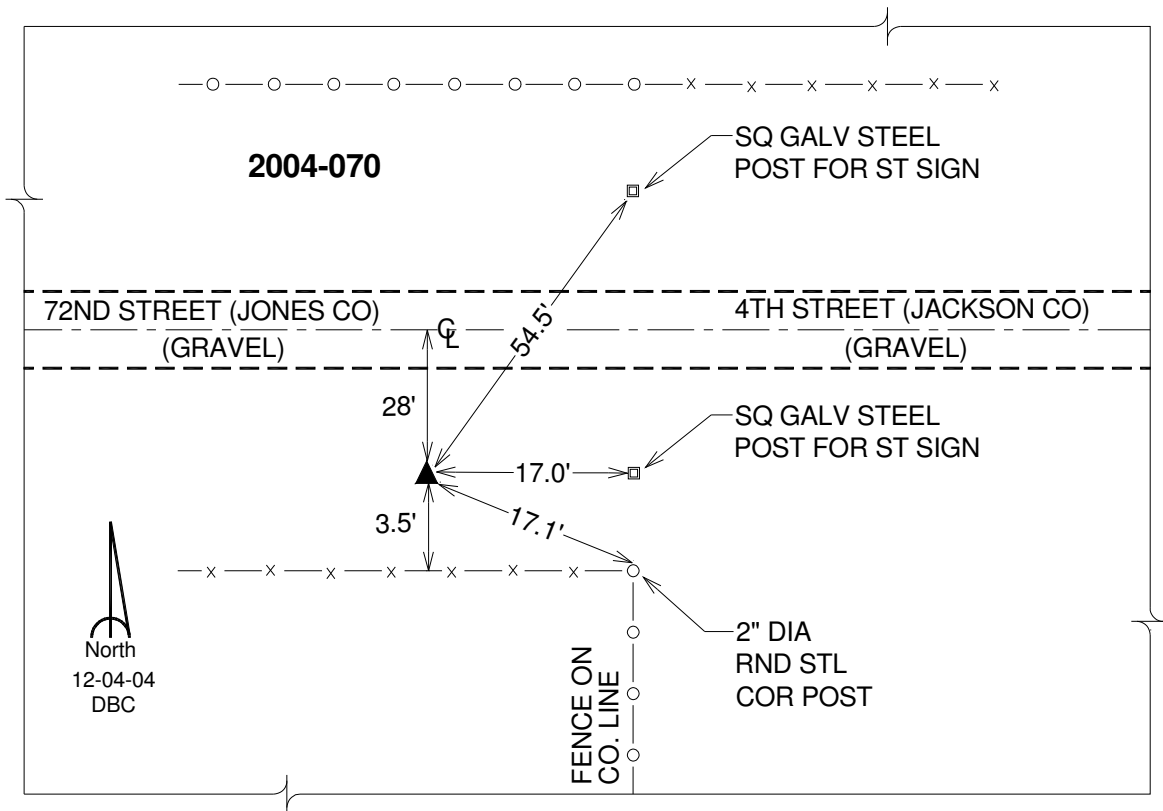
Northing: **752789.38sft** Easting: **2347097.35sft**

Orthometric Height: **819.78sft** Ellipsoid Height: **712.93sft** **Geoid12A**

Latitude: **N42°02'13.53718"** Longitude: **W90°53'54.34120"**

Mapping Angle: **1°42'49"** Combination Scale Factor: **1.000020915**

Monument Type: Berntsen Top Security Rod Monument with a 2-1/2" dia. domed cap and a permanent magnet encased in a 5" dia. PVC pipe with a NGS style aluminum access cover.



This document was prepared by DCI on 05-29-2013 for use by Clinton County, Iowa.

Clinton County, Iowa
Iowa South Zone (1402)
Horiz. Datum: **NAD83(NA2011)**
Vert. Datum: NAVD 1988
US Survey Feet
2013

Point Name: **5079**

Designation: NGS 2nd order vertical control "R 79" PID: NJ0245

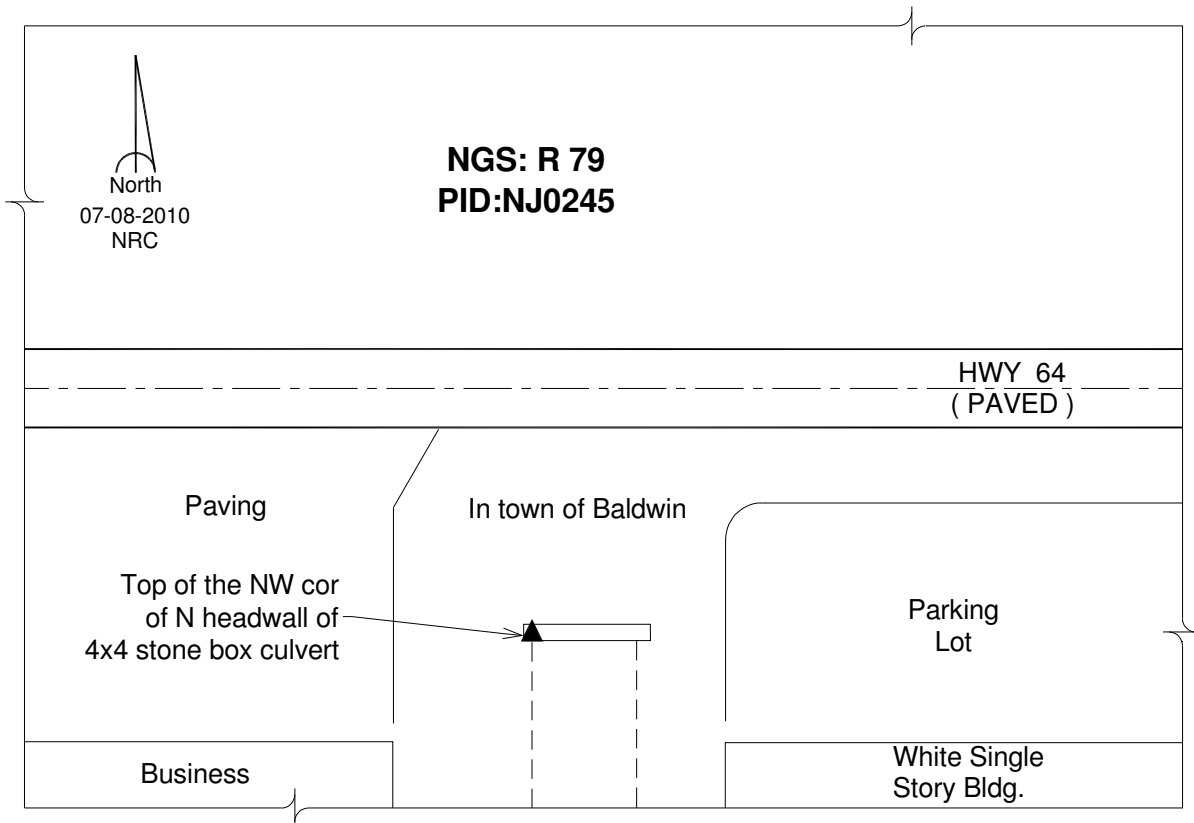
Northing: **766360.03sft** Easting: **2362434.37sft**

Orthometric Height: **716.14sft** Ellipsoid Height: **609.25sft** **Geoid12A**

Latitude: **N42°04'22.94866"** Longitude: **W90°50'25.70722"**

Mapping Angle: **1°45'07"** Combination Scale Factor: **1.000035244**

Monument Type: Bench Mark disk stamped " R 79 1934" set in top of the NW cor of the N headwall of a 4x4 stone box culvert



This document was prepared by DCI on 05-29-2013 for use by Clinton County, Iowa.

Clinton County, Iowa
Iowa South Zone (1402)
Horiz. Datum: **NAD83(NA2011)**
Vert. Datum: NAVD 1988
US Survey Feet
2013

Point Name: **5080**

Designation: CBN horiz. control station and 1st order vert. "C 175" PID: NJ0104

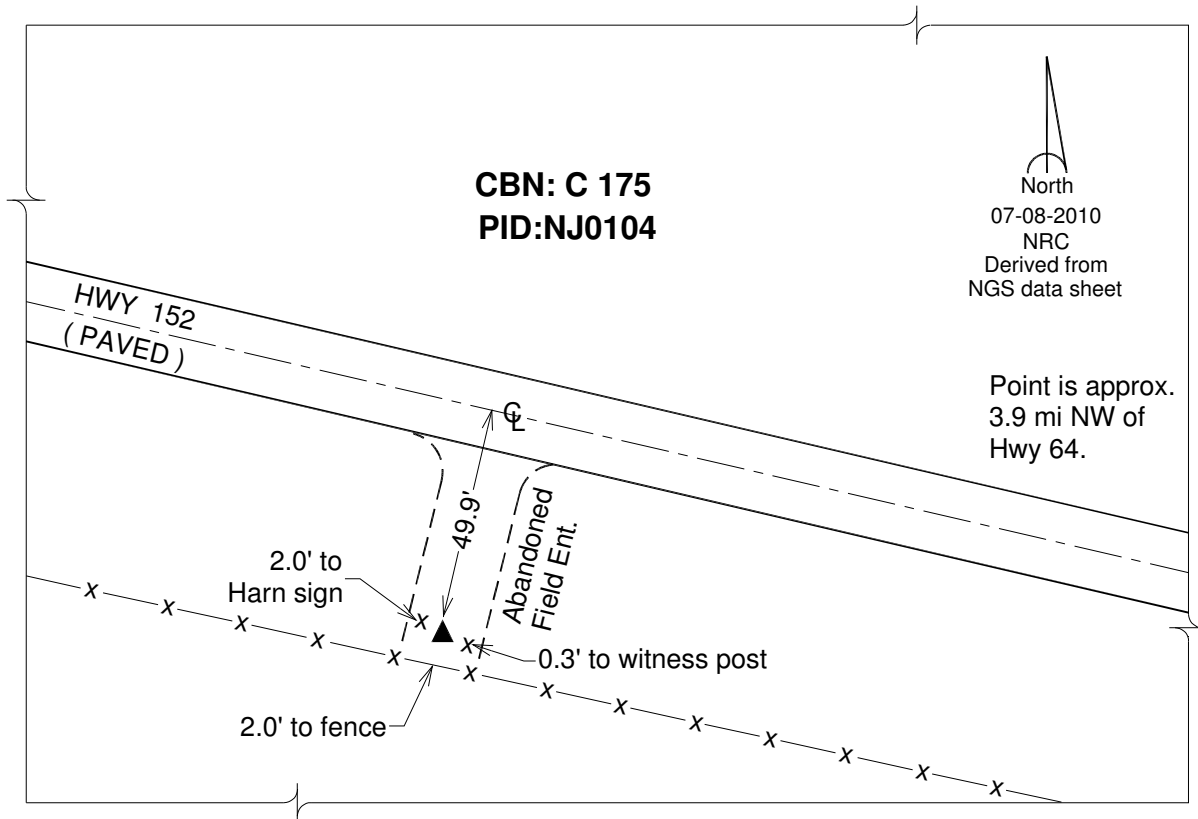
Northing: **788004.05sft** Easting: **2530201.04sft**

Orthometric Height: **627.21sft** Ellipsoid Height: **518.72sft** **Geoid12A**

Latitude: **N42°07'00.05690"** Longitude: **W90°13'12.13315"**

Mapping Angle: **2°09'38"** Combination Scale Factor: **1.000051488**

Monument Type: Bench Mark disk stamped " C 175 1970" set in the top of a metal pipe driven into ground.



This document was prepared by DCI on 05-29-2013 for use by Clinton County, Iowa.